

**RIDDLE**  
**ASSOCIATES Inc.**  
Commercial Real Estate

# OFFICE/WAREHOUSE FOR LEASE

908 Executive Court, Unit 104 & 105  
Chesapeake, VA 23320  
(GREENBRIER COMMERCE PARK)



- 2 - 1,000 Square Foot Adjacent Office/Warehouse Units Available
- Lease Rate: \$1,200.00 Per Unit, Per Month
- Tenant Responsible for Electric, Janitorial & Trash
- Second Floor Storage Above Offices
- Grade Level Loading
- Located in Greenbrier Commerce Park
- Ideal for Contractor, Light Manufacturer, Distribution, Etc.
- Owner/Agent



*The information presented in this marketing flyer is obtained from sources believed to be reliable, but is not warranted. This offer is subject to prior sale or lease, errors, omissions or withdrawal without notice.*

**EXCLUSIVELY OFFERED BY :**

**CONTACT:**

**ROBB RIDDLE, CCIM**

[rlr@riddleassociates.com](mailto:rlr@riddleassociates.com)

**(757) 523-1900**

**RIDDLE ASSOCIATES, INC.**

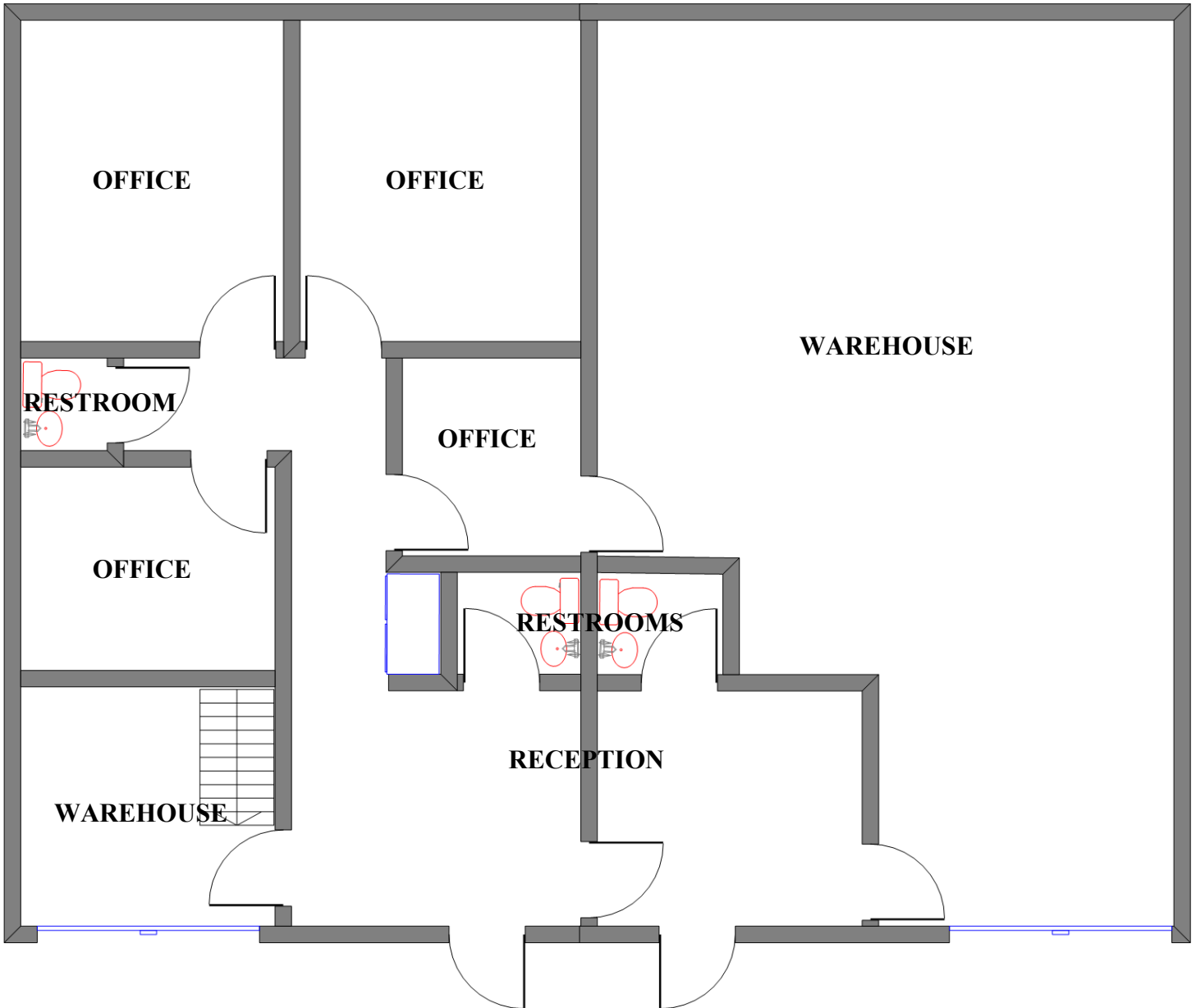
**Commercial Real Estate**

**“Real Estate Services Tailored to Your Needs”**

530 Woodlake Circle • Suite 100 • Chesapeake, VA 23320 • [www.riddleassociates.com](http://www.riddleassociates.com)

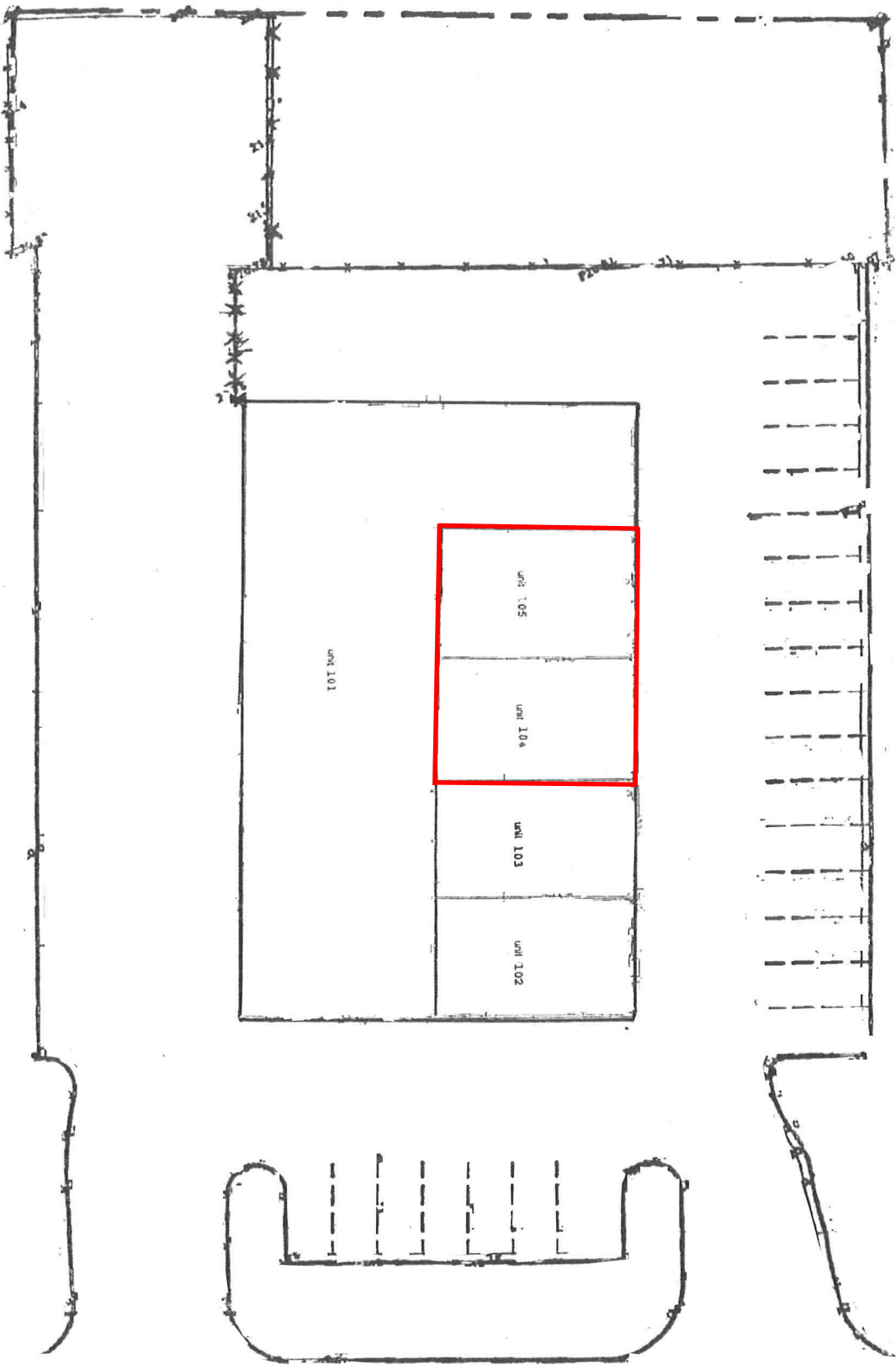
**SUITE 104**

**SUITE 105**



**908 Executive Court, Chesapeake, VA 23320**

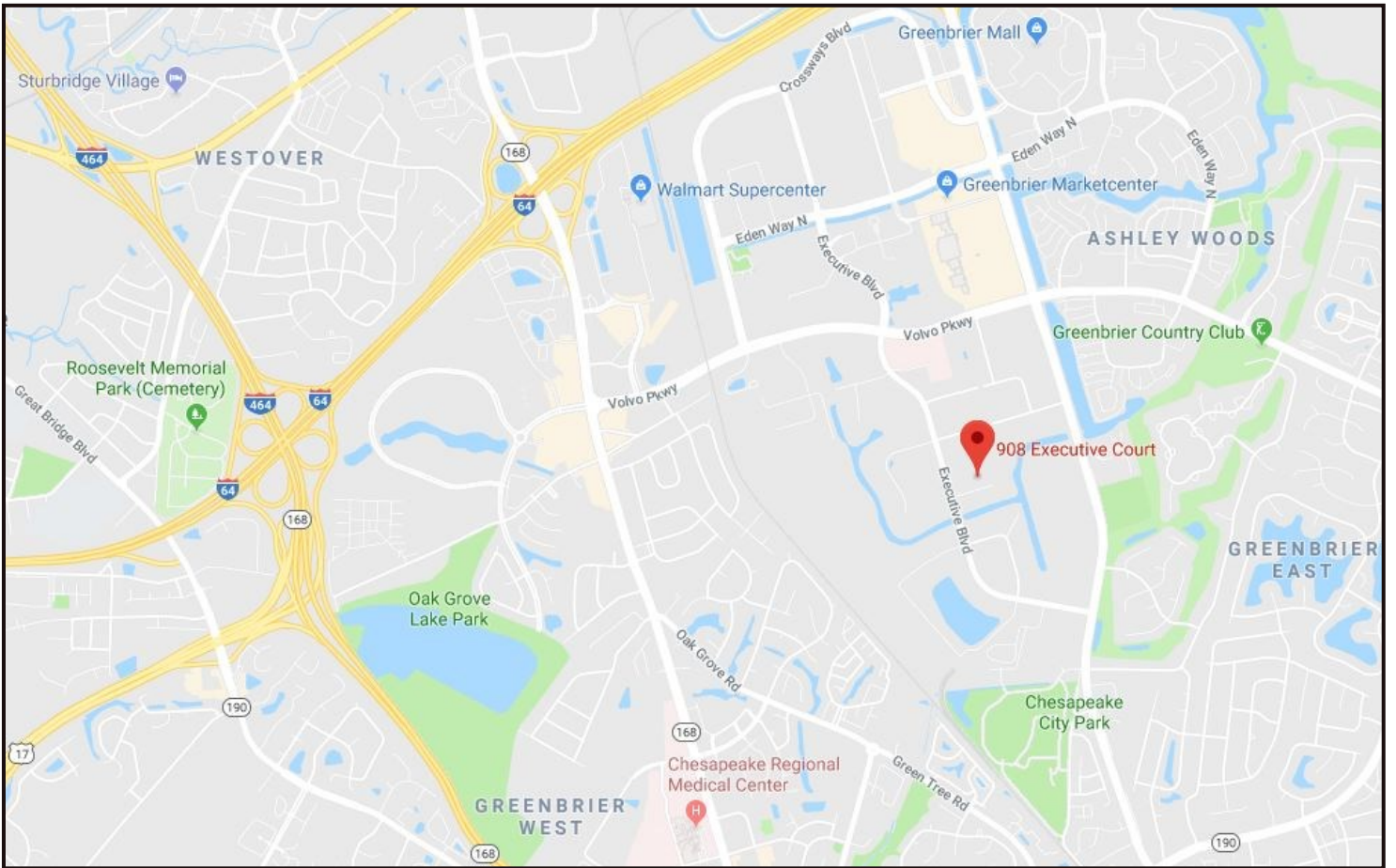
*The information presented in this marketing flyer is obtained from sources believed to be reliable, but is not warranted. This offer is subject to prior sale or lease, errors, omissions or withdrawal without notice.*



**908 Executive Court, Chesapeake, VA 23320**

---

*The information presented in this marketing flyer is obtained from sources believed to be reliable, but is not warranted. This offer is subject to prior sale or lease, errors, omissions or withdrawal without notice.*



## 908 Executive Court, Chesapeake, VA 23320

*The information presented in this marketing flyer is obtained from sources believed to be reliable, but is not warranted. This offer is subject to prior sale or lease, errors, omissions or withdrawal without notice.*