

# INDUSTRIAL OFFICE/WAREHOUSE FOR SALE OR LEASE

937 Corporate Lane  
Chesapeake, VA 23320



**Sales Price: \$1,000,000 (\$104.72/SF)**

**Lease Rate: \$8,356/Month (\$10.50/SF), NNN**

- 9,550 Square Foot Stand Alone Industrial Building with 2 Large Mezzanines
- Fenced-In Storage Yard
- 1 Acre Lot, Zoned PUD
- 2 10'x10' Overhead Doors, 1 12'x14' Overhead Door
- Centrally Located in the Heart of Greenbrier with Easy Access to Greenbrier Pkwy.
- 2.2 Miles from I-64, 2 Miles from Route 168 (Battlefield Boulevard) and 4 Miles from I-464

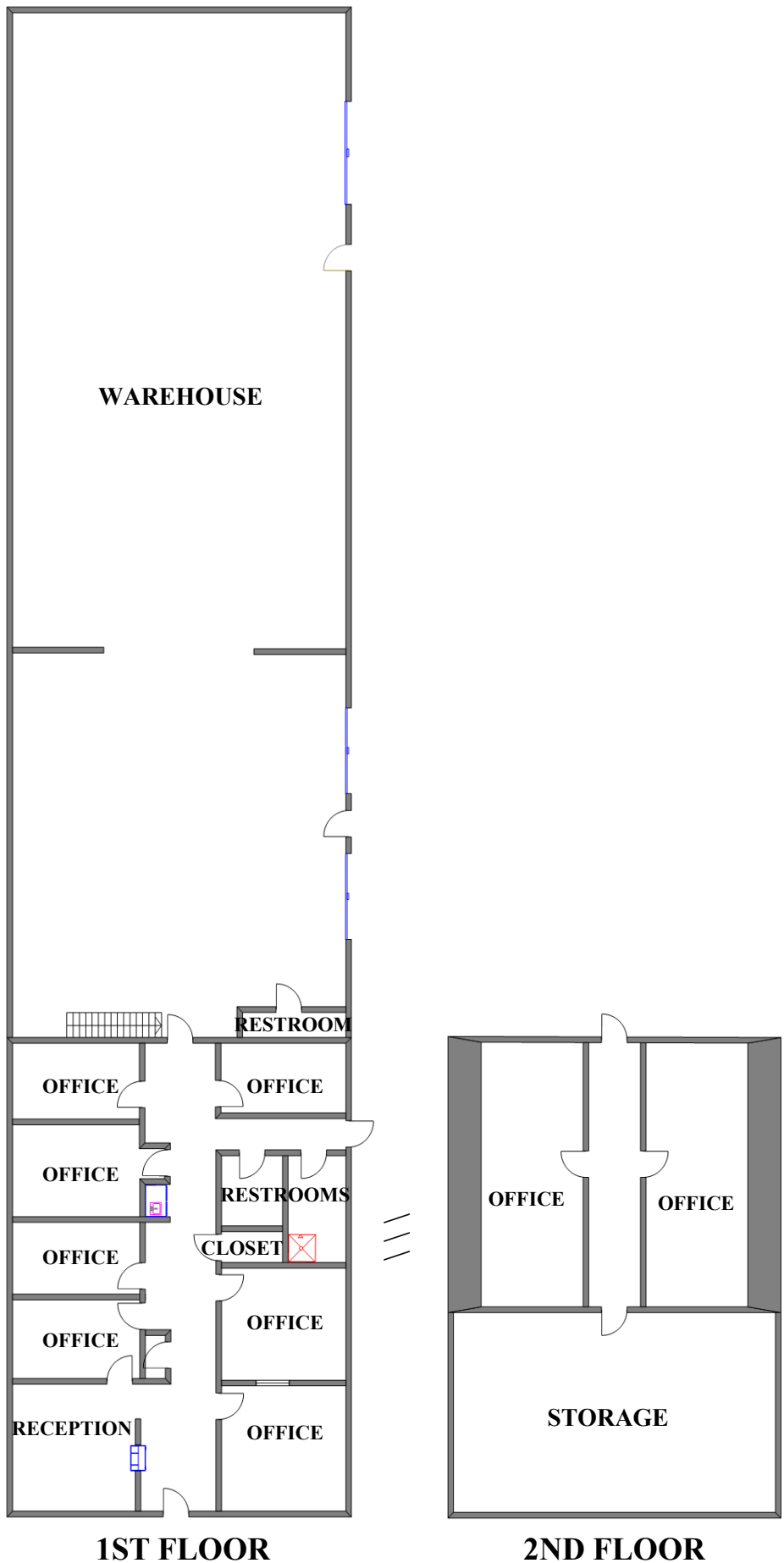
The information presented in this marketing flyer is obtained from sources believed to be reliable, but is not warranted.  
This offer is subject to prior sale or lease, errors, omissions or withdrawal without notice.

**EXCLUSIVELY OFFERED BY :** \_\_\_\_\_

**CONTACT: ROBERT L. RIDDLE, CCIM**  
**LINDSEY R. ELLIOTT or DAVID HUNTER**  
**(757) 523-1900**

**RIDDLE ASSOCIATES, INC.**  
**Commercial Real Estate**

**“Real Estate Services Tailored to Your Needs”**



**937 Corporate Lane, Chesapeake, VA 23320**

*The information presented in this marketing flyer is obtained from sources believed to be reliable, but is not warranted. This offer is subject to prior sale or lease, errors, omissions or withdrawal without notice.*

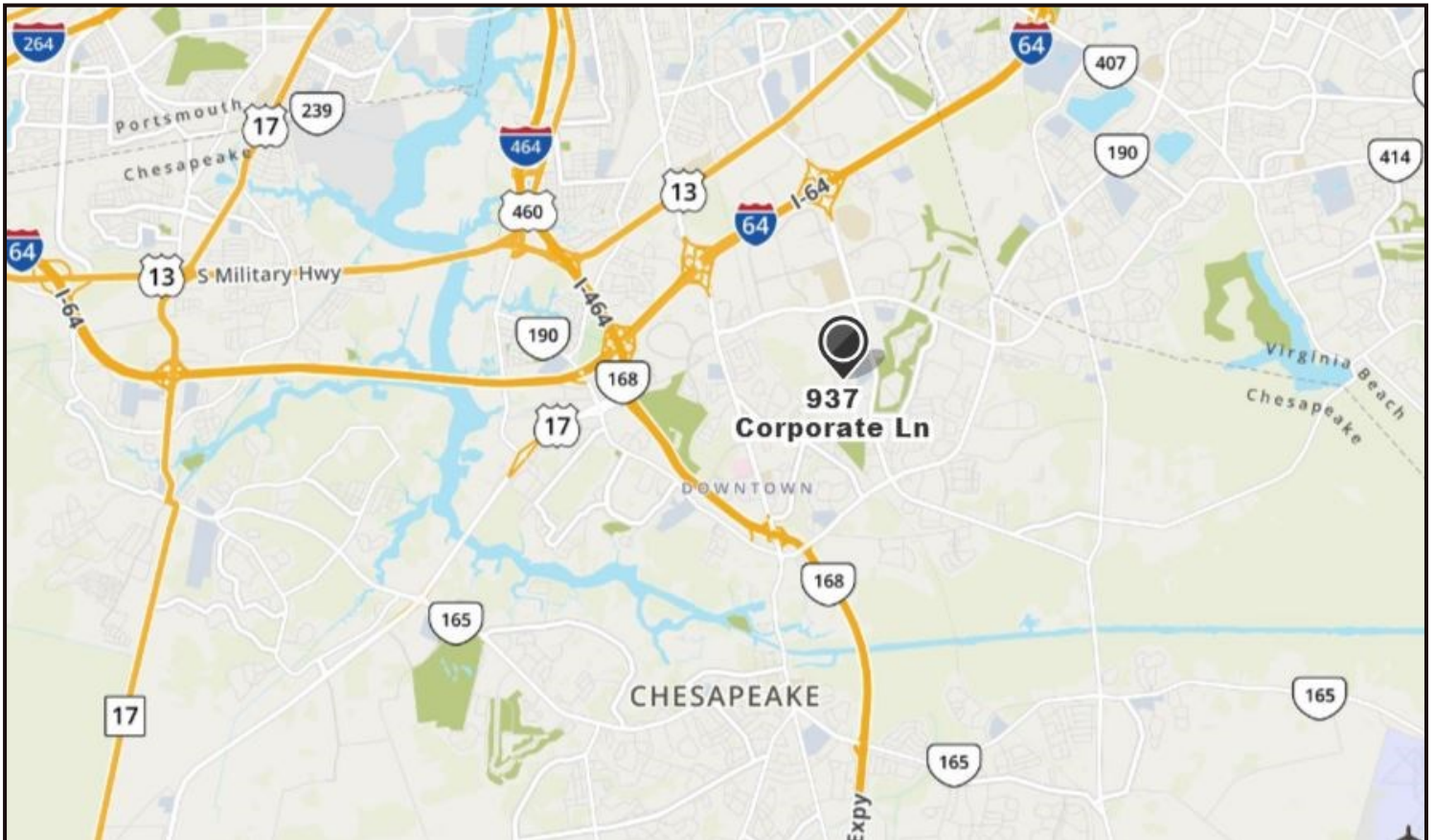
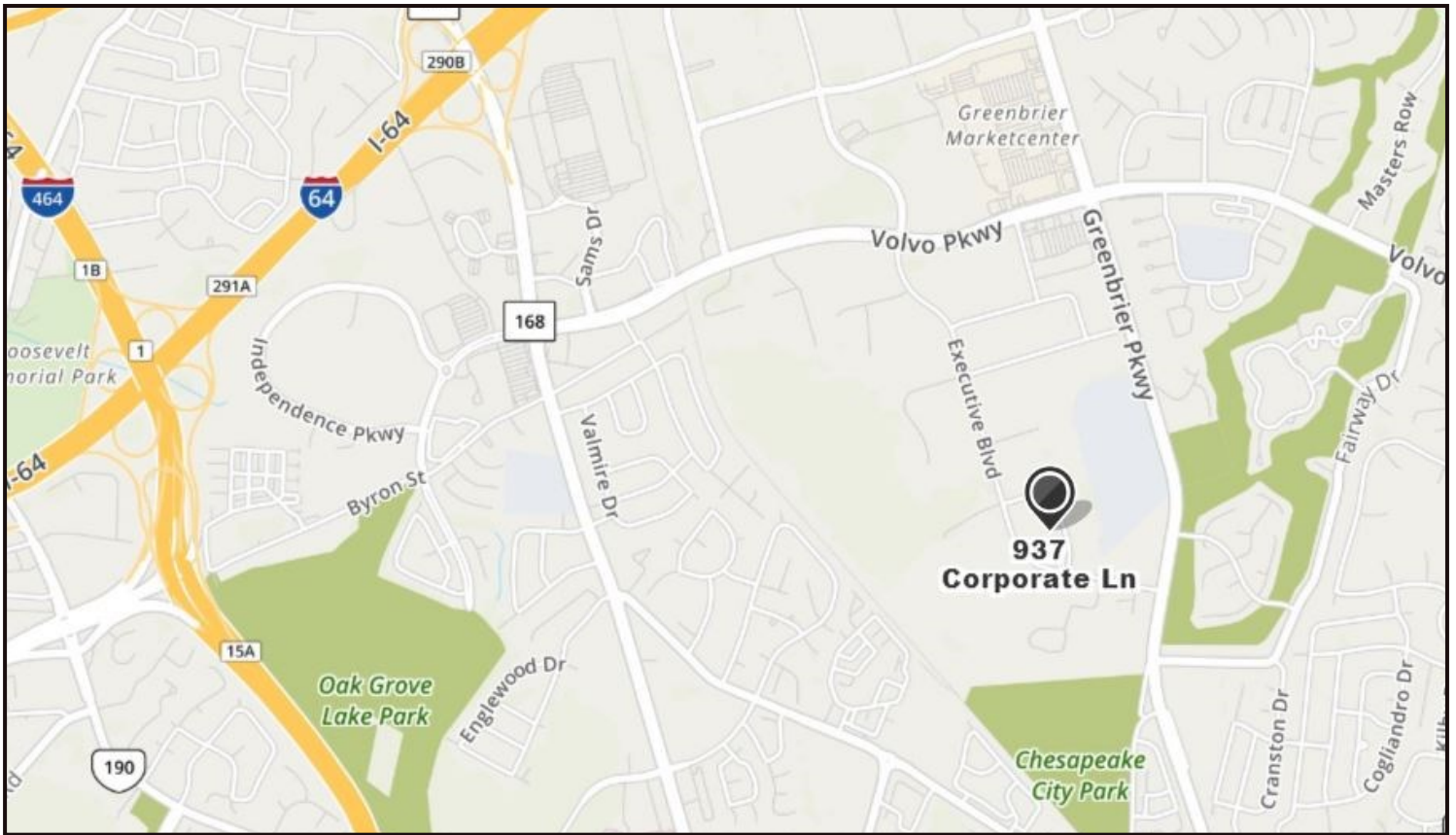




## 937 Corporate Lane, Chesapeake, VA 23320

*The information presented in this marketing flyer is obtained from sources believed to be reliable, but is not warranted. This offer is subject to prior sale or lease, errors, omissions or withdrawal without notice.*





## 937 Corporate Lane, Chesapeake, VA 23320

*The information presented in this marketing flyer is obtained from sources believed to be reliable, but is not warranted. This offer is subject to prior sale or lease, errors, omissions or withdrawal without notice.*