

# 117 ACRES LAND FOR SALE

Route 58, W. Military Highway;  
Branchview Way and Jolliff Road  
Bowers Hill, Chesapeake, VA 23321



- Location: Bowers Hill Interchange - W. Military Highway, Route 58, Route 460, Jolliff Road (Route 191), I-664, I-64, I-264 and Route 13
- Size: 117 Acres - Approximately 67 Acres Uplands, 50 Acres Wetlands
- Zoning: Currently A-1, Agricultural
- Access: W. Military Highway, Jolliff Road and Branchview Way
- Utilities: City Water Available on Jolliff Road, No City Sewer
- Price: Negotiable, Open To Offers

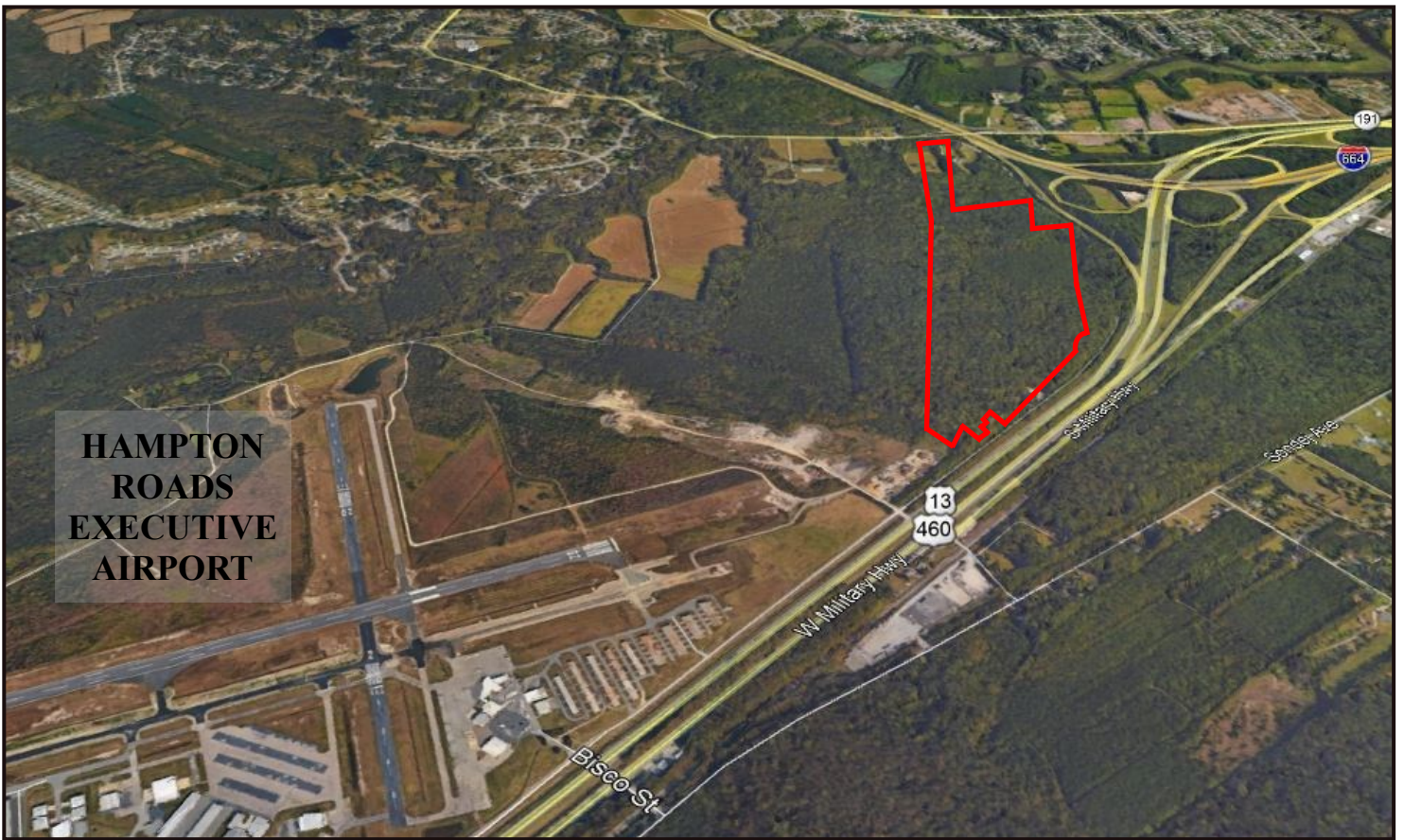
The information presented in this marketing flyer is obtained from sources believed to be reliable, but is not warranted.  
This offer is subject to prior sale or lease, errors, omissions or withdrawal without notice.

**EXCLUSIVELY OFFERED BY :**

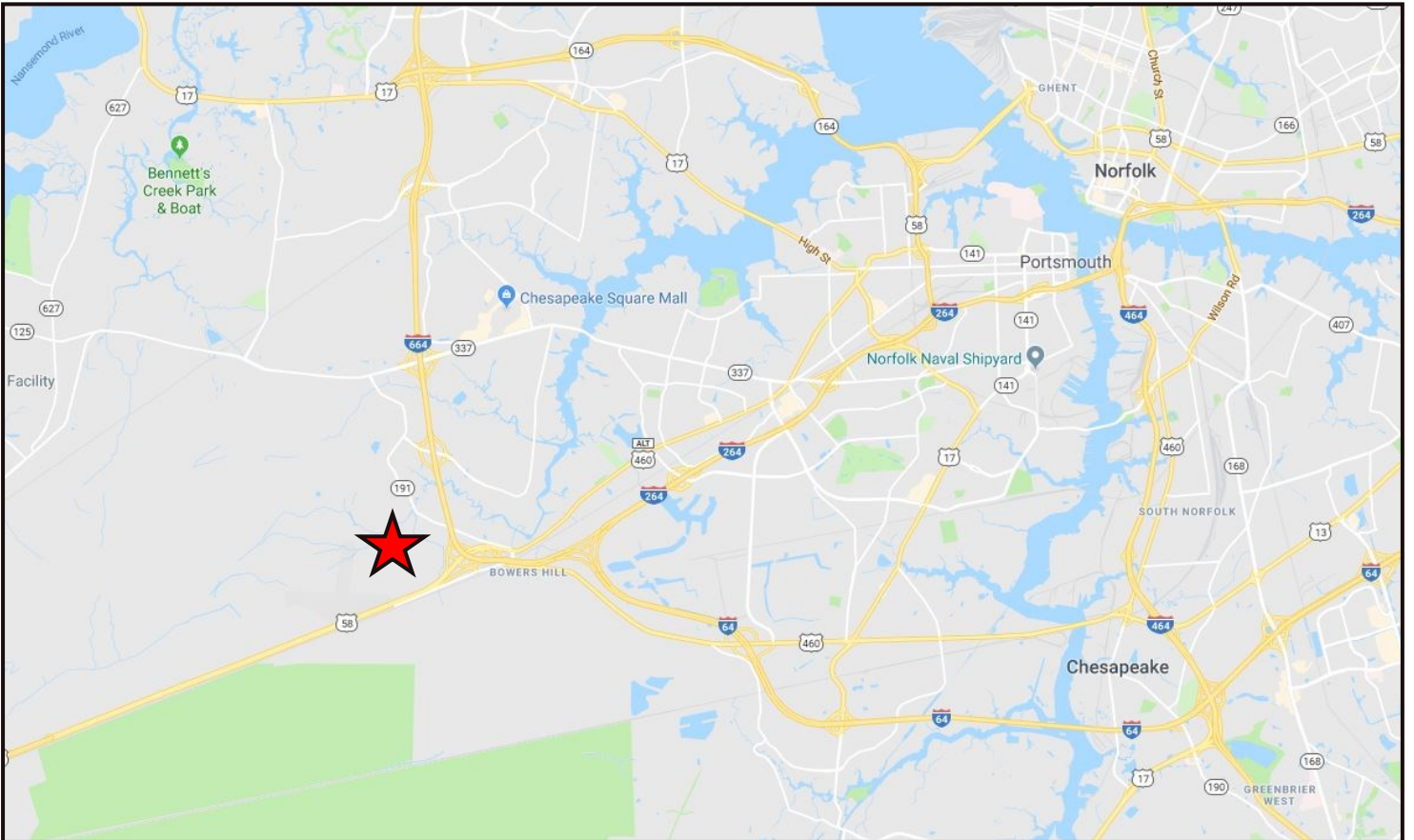
**CONTACT:**  
**LARRY RUMSEY**  
[lrumsey@riddleassociates.com](mailto:lrumsey@riddleassociates.com)  
**(757) 523-1900**

**RIDDLE ASSOCIATES, INC.**  
Commercial Real Estate

“Real Estate Services Tailored to Your Needs”

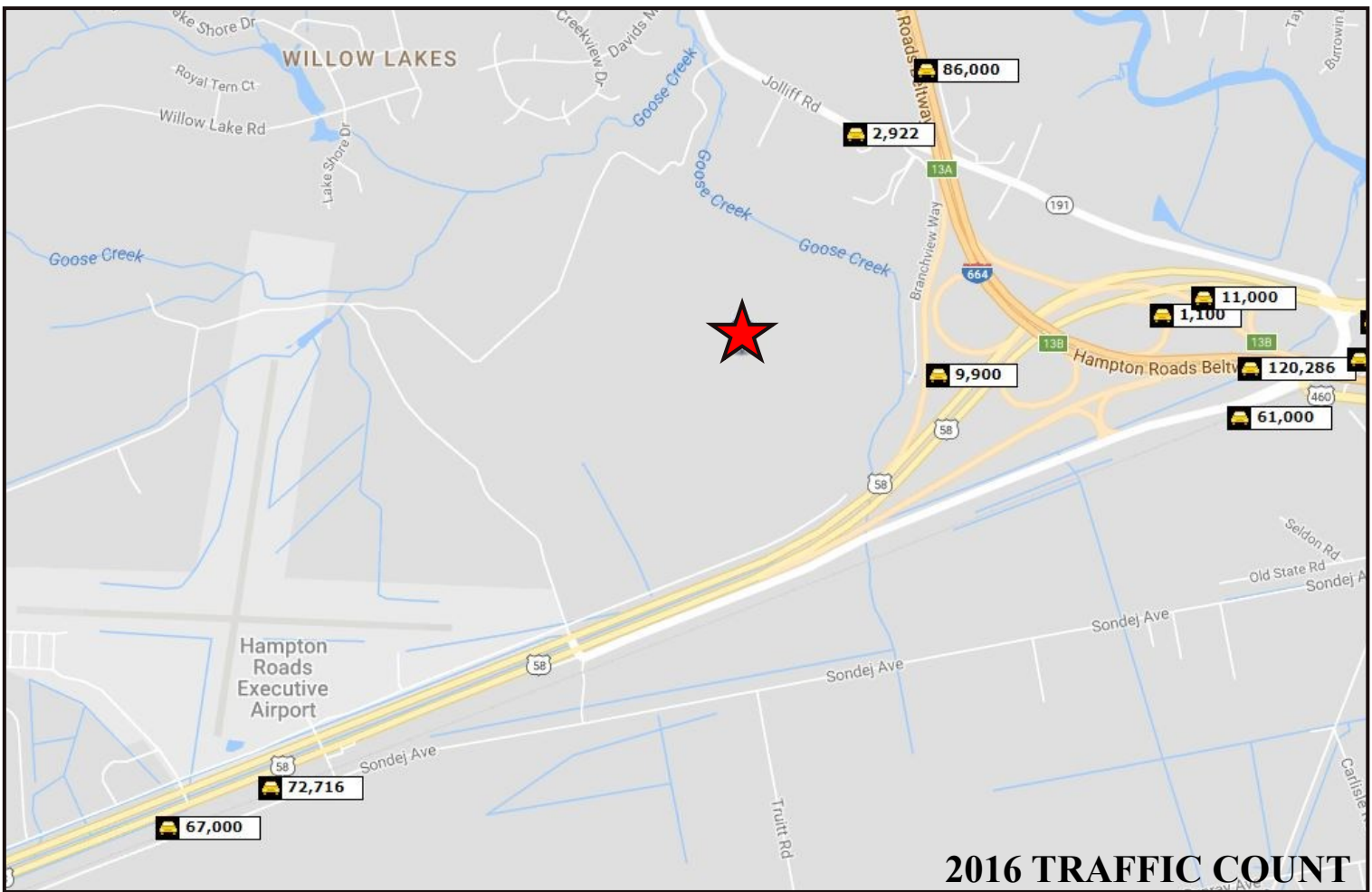
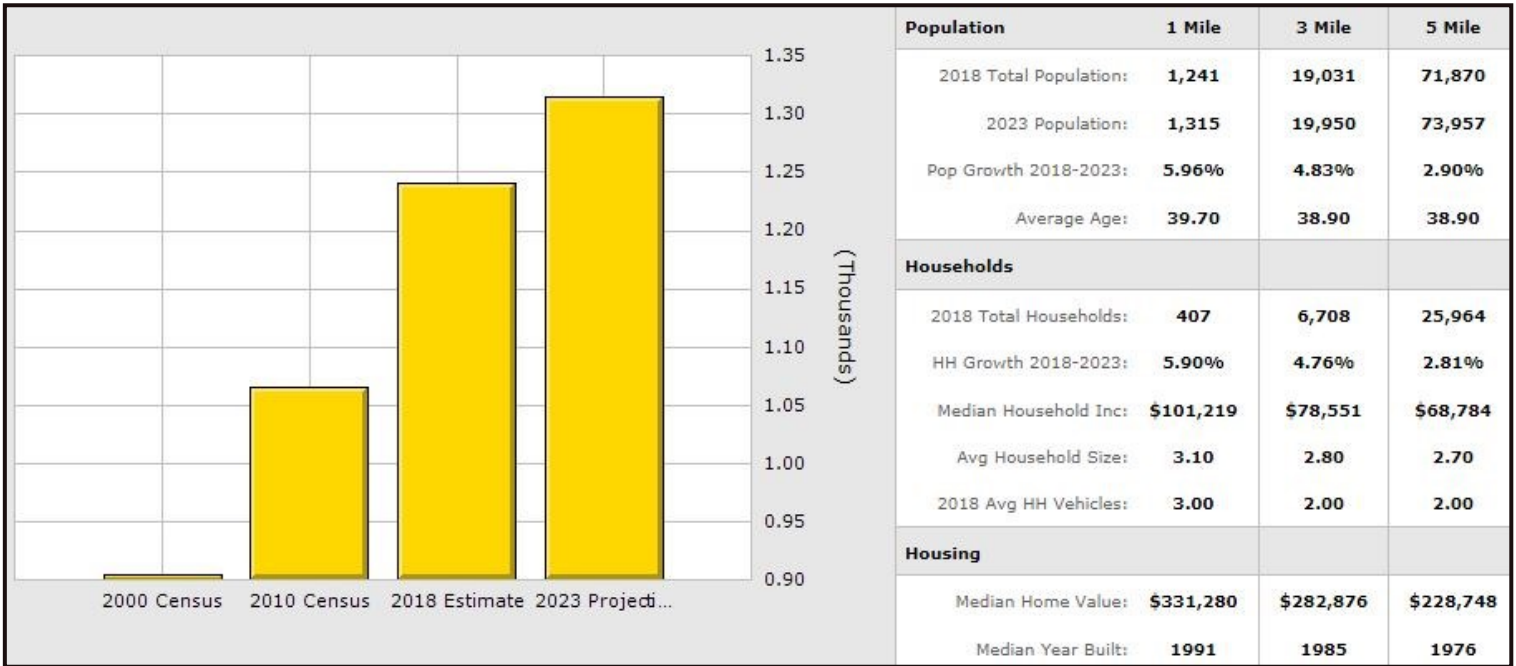


**HAMPTON  
ROADS  
EXECUTIVE  
AIRPORT**



## **117 Acres, Bowers Hill, Chesapeake, VA 23321**

*The information presented in this marketing flyer is obtained from sources believed to be reliable, but is not warranted. This offer is subject to prior sale or lease, errors, omissions or withdrawal without notice.*



## 117 Acres, Bowers Hill, Chesapeake, VA 23321

The information presented in this marketing flyer is obtained from sources believed to be reliable, but is not warranted. This offer is subject to prior sale or lease, errors, omissions or withdrawal without notice.