

RETAIL PROPERTY FOR LEASE

1020 Fishermans Road
Norfolk, VA 23503



- 2,100SF Freestanding Building
- \$17.00/SF, Modified Net
- Flexible Layout
- Ample Parking
- Former Bank Branch
- Bank Vault In Place



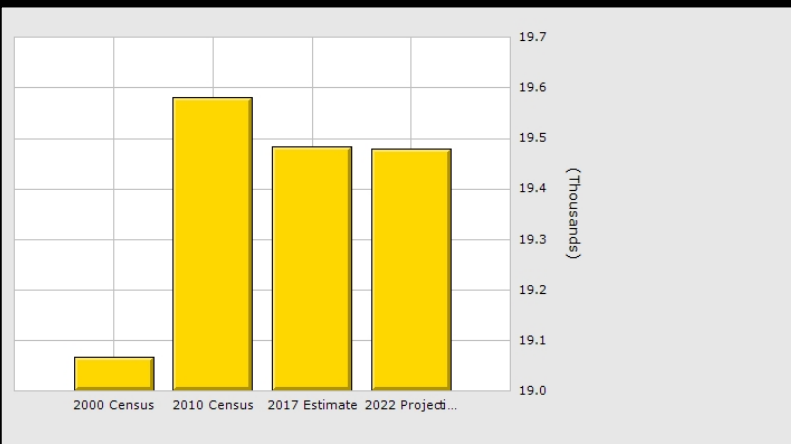
The information presented in this marketing flyer is obtained from sources believed to be reliable, but is not warranted.
This offer is subject to prior sale or lease, errors, omissions or withdrawal without notice.

EXCLUSIVELY OFFERED BY : _____

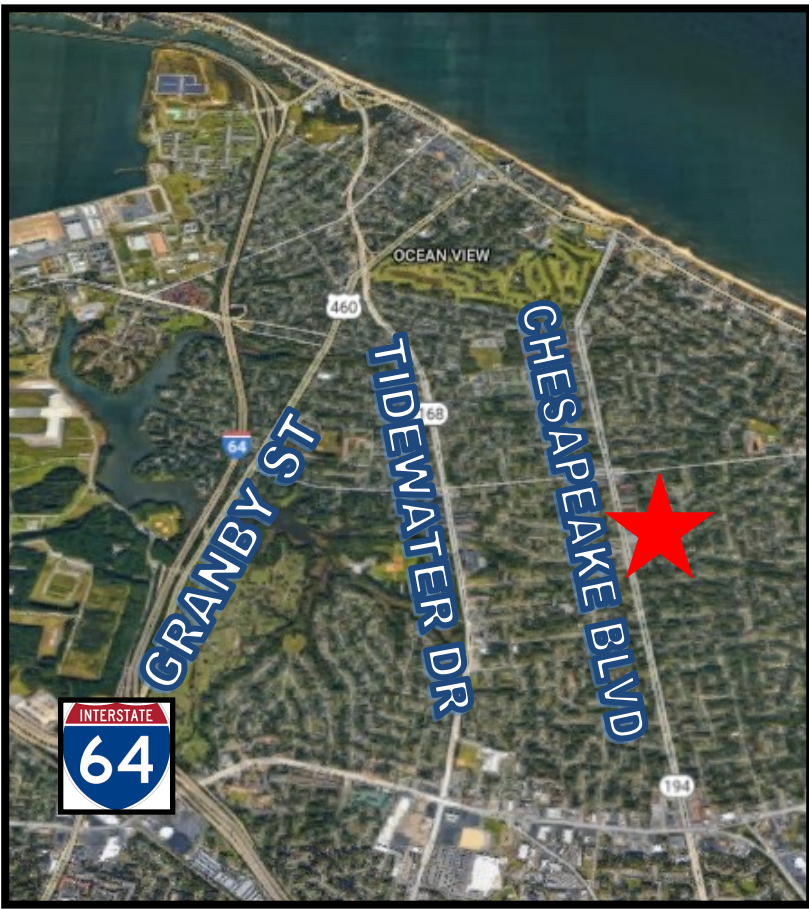
CONTACT: BILL BRACKMAN
(757) 523-1900

RIDDLE ASSOCIATES, INC.
Commercial Real Estate

“Real Estate Services Tailored to Your Needs”

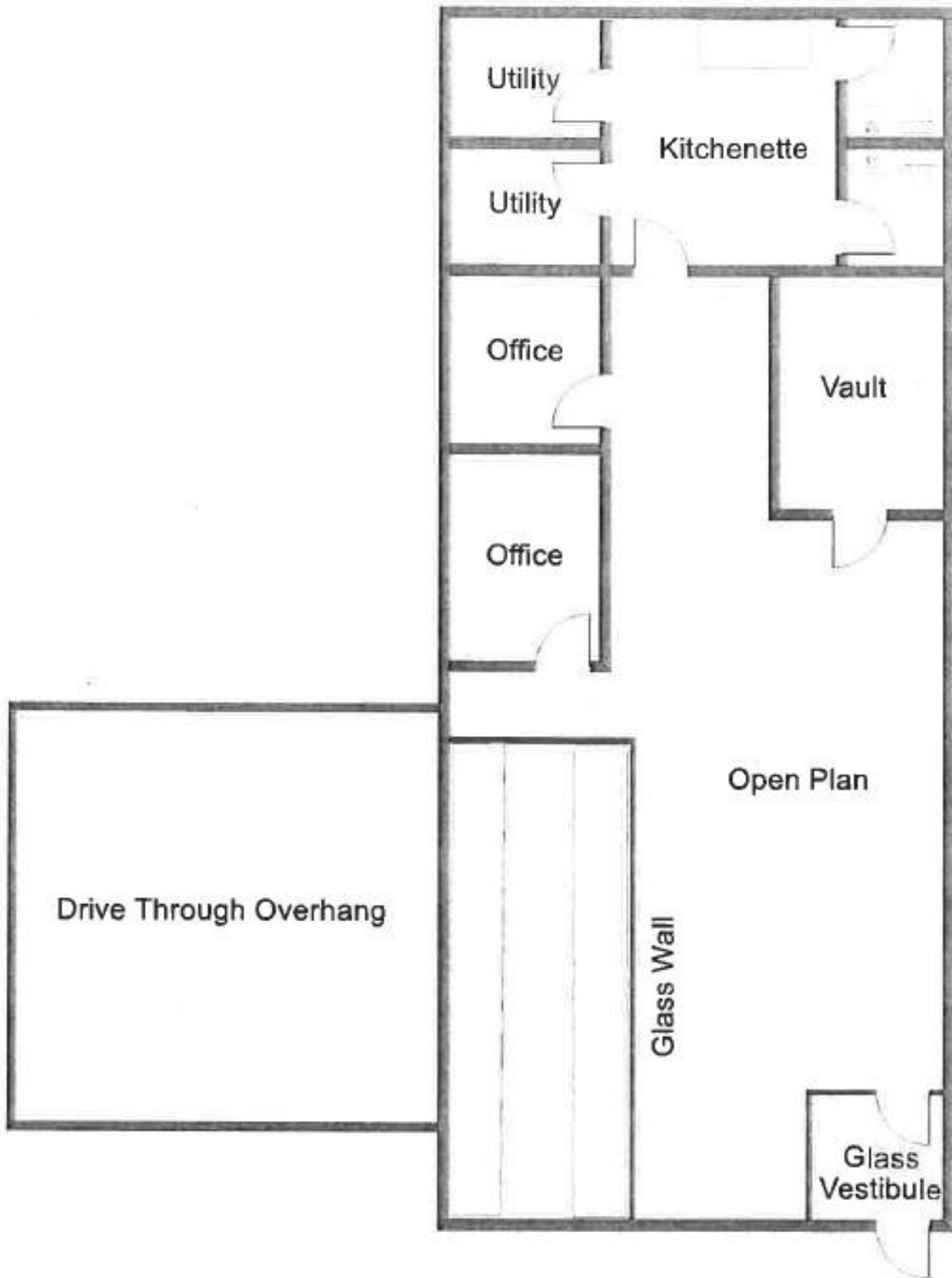


	1 Mile	3 Mile	5 Mile
Population			
2017 Total Population:	19,483	92,595	174,954
2022 Population:	19,480	92,805	175,655
Pop Growth 2017-2022:	(0.02%)	0.23%	0.40%
Average Age:	35.80	35.90	35.20
Households			
2017 Total Households:	7,819	37,805	67,826
HH Growth 2017-2022:	(0.12%)	0.16%	0.33%
Median Household Inc:	\$52,620	\$46,846	\$47,700
Avg Household Size:	2.50	2.40	2.40
2017 Avg HH Vehicles:	2.00	2.00	2.00
Housing			
Median Home Value:	\$182,232	\$195,575	\$196,734
Median Year Built:	1957	1961	1960



1020 Fishermans Road, Norfolk, VA 23503

The information presented in this marketing flyer is obtained from sources believed to be reliable, but is not warranted. This offer is subject to prior sale or lease, errors, omissions or withdrawal without notice.



1020 Fishermans Road, Norfolk, VA 23503

*The information presented in this marketing flyer is obtained from sources believed to be reliable, but is not warranted.
This offer is subject to prior sale or lease, errors, omissions or withdrawal without notice.*