

**RIDDLE**  
**ASSOCIATES** Inc.  
Commercial Real Estate

# OFFICE / WAREHOUSE FOR LEASE

920 Ventures Way  
Chesapeake, Virginia 23320



- **Suites 5 & 6:** 3,000 SF (50% Office / 50% Warehouse) with Mezzanine
- **Lease Rate:** \$2,625 Per Month (\$10.50/SF)
- Net of Electricity, Janitorial & Interior Maintenance
- Three (3) 10'W x 12'H Grade Level Overhead Doors
- PUD Zoning
- Centrally located in Greenbrier Commerce Park
- Convenient Access to Battlefield Boulevard, Greenbrier Parkway, I-64

The information presented in this marketing flyer is obtained from sources believed to be reliable, but is not warranted.  
This offer is subject to prior sale or lease, errors, omissions or withdrawal without notice.

**EXCLUSIVELY OFFERED BY :** \_\_\_\_\_

**CONTACT:**

**LINDSEY R. ELLIOTT**

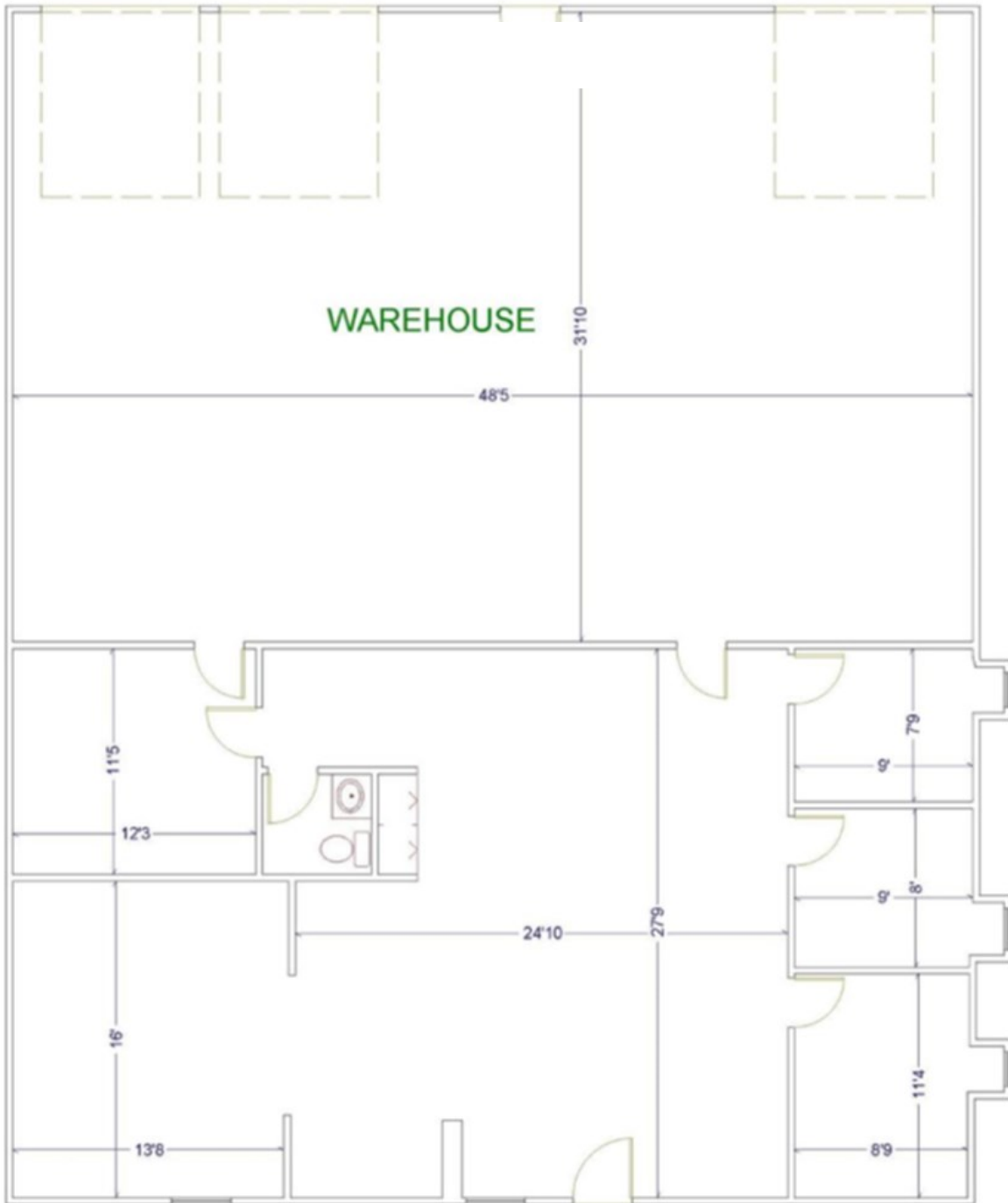
[lre@riddleassociates.com](mailto:lre@riddleassociates.com)

**(757) 523-1900**

**RIDDLE ASSOCIATES, INC.**  
*Commercial Real Estate*

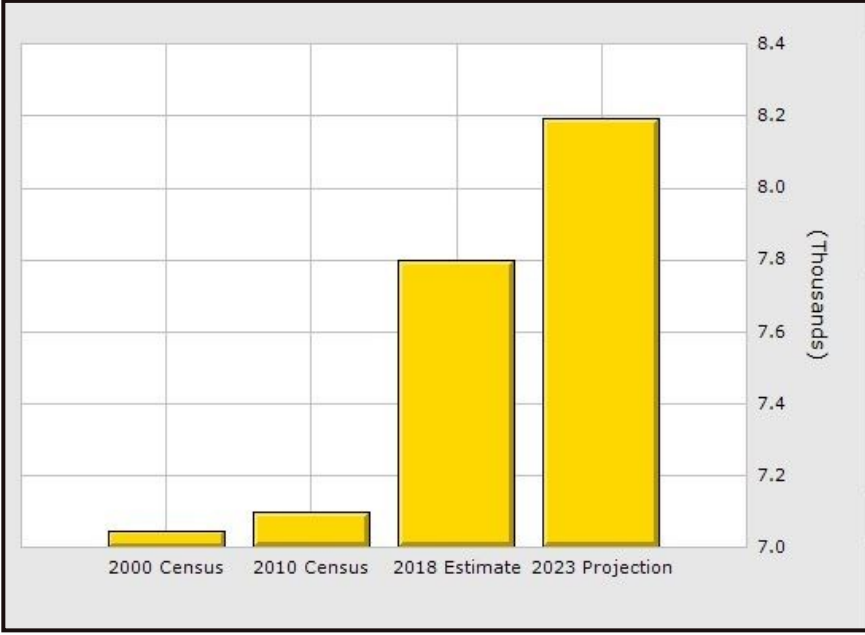
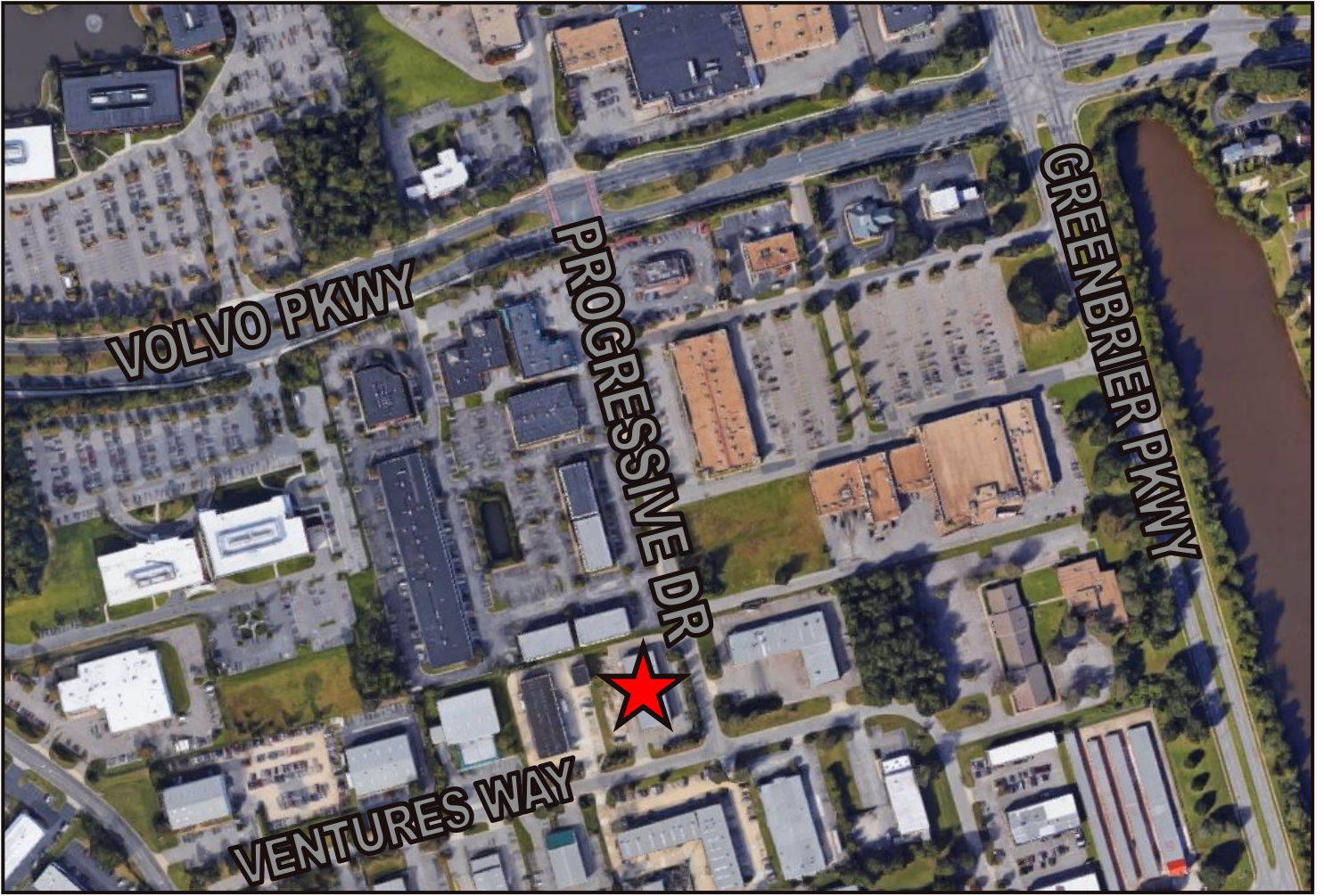
“Real Estate Services Tailored to Your Needs”

# SUITES 5 & 6



**920 Ventures Way, Chesapeake, VA 23320**

*The information presented in this marketing flyer is obtained from sources believed to be reliable, but is not warranted. This offer is subject to prior sale or lease, errors, omissions or withdrawal without notice.*

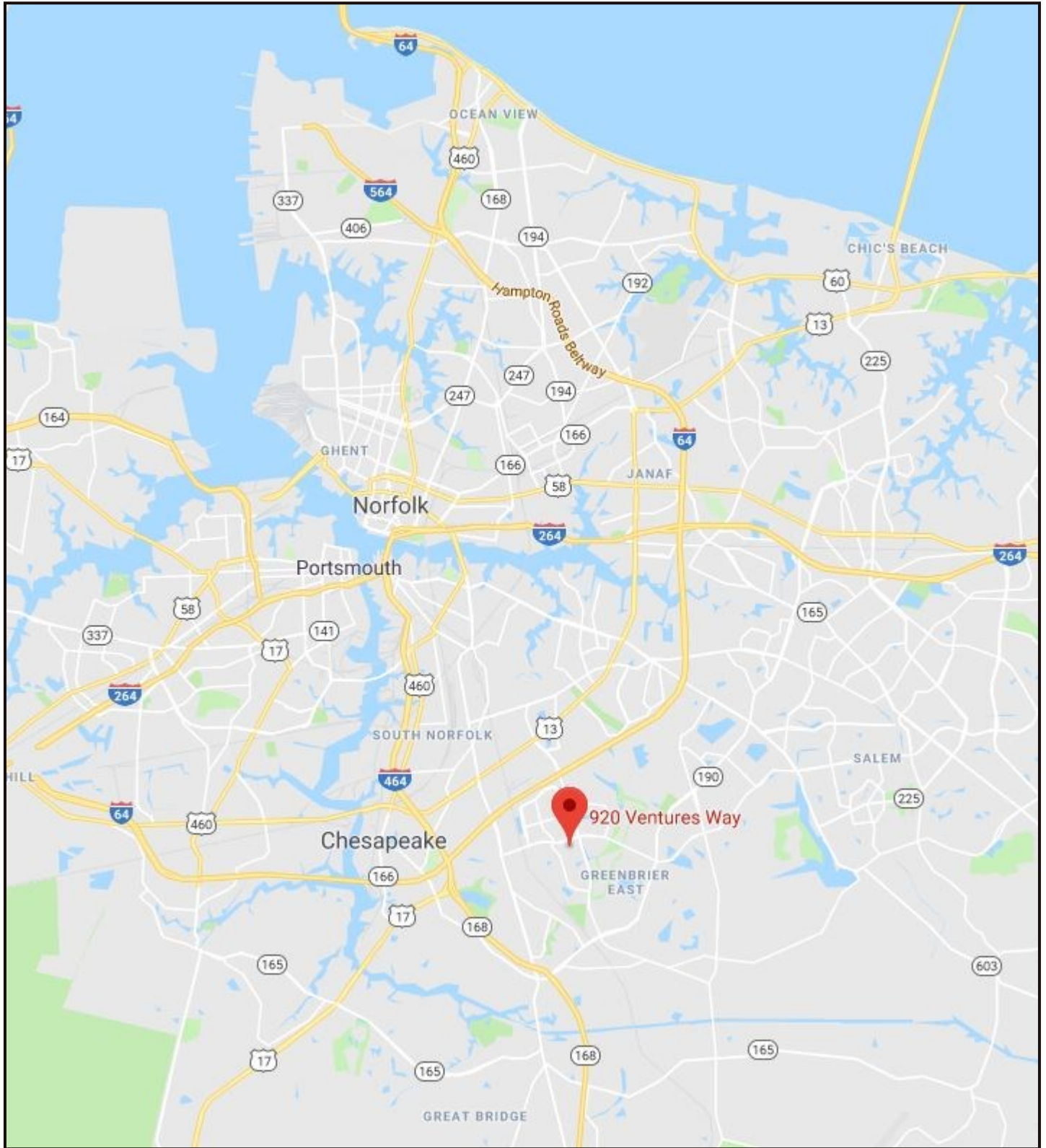


	1 Mile	3 Mile	5 Mile
<b>Population</b>			
2018 Total Population:	7,799	85,885	208,609
2023 Population:	8,193	89,668	215,845
Pop Growth 2018-2023:	5.05%	4.40%	3.47%
Average Age:	36.80	37.20	37.20
<b>Households</b>			
2018 Total Households:	3,288	33,604	77,237
HH Growth 2018-2023:	5.14%	4.58%	3.61%
Median Household Inc:	\$64,929	\$69,771	\$69,545
Avg Household Size:	2.40	2.50	2.70
2018 Avg HH Vehicles:	2.00	2.00	2.00
<b>Housing</b>			
Median Home Value:	\$246,963	\$243,829	\$246,924
Median Year Built:	1989	1989	1984

## 920 Ventures Way, Chesapeake, VA 23320

The information presented in this marketing flyer is obtained from sources believed to be reliable, but is not warranted. This offer is subject to prior sale or lease, errors, omissions or withdrawal without notice.





**920 Ventures Way, Chesapeake, VA 23320**

*The information presented in this marketing flyer is obtained from sources believed to be reliable, but is not warranted. This offer is subject to prior sale or lease, errors, omissions or withdrawal without notice.*