

RIDDLE
ASSOCIATES Inc.

Commercial Real Estate

OFFICE SPACES FOR LEASE

445 N. Battlefield Boulevard, Suites F & G
Chesapeake, VA 23320



**LEASE RATE SUITES F & G \$17.00PSF
(INCLUDES COMMON AREA MAINTENANCE)**

- **Unit F**
 - \$1,275/month
 - 900 SF, Professional Office Space
 - under renovations Availability TBD
- **Unit G**
 - \$1,360/month
 - 960 SF, Professional Office Space
 - Available February 1, 2024
- Located in Great Bridge off N. Battlefield Blvd. and just off 168 Bypass
- Zoned: B-2
- Lease rate includes all CAM charges, dumpster and water!

EXCLUSIVELY OFFERED BY:

CONTACT:

LINDSEY R. ELLIOTT

lre@riddleassociates.com

(757) 523-1900

The information presented in this marketing flyer is obtained from sources believed to be reliable, but is not warranted. This offer is subject to prior sale or lease, errors, omissions or withdrawal without notice.

RIDDLE ASSOCIATES, INC.
Commercial Real Estate

"Real Estate Services Tailored to Your Needs"

THIS PROPERTY APPEARS TO FALL INSIDE FLOOD ZONE B
 AS SHOWN ON F.E.M.A. FLOOD MAP COMMUNITY NUMBER 510034B
 PANEL NUMBER W.A.P., DATED 2/2/77

I ACKNOWLEDGE AND ACCEPT ALL EASEMENTS, RESTRICTIONS AND ENCROACHMENTS ON THIS SURVEY.

THE SHEEHAN GROUP, INC.

By Bradley J. Sheehan 11/22/96
 President Date

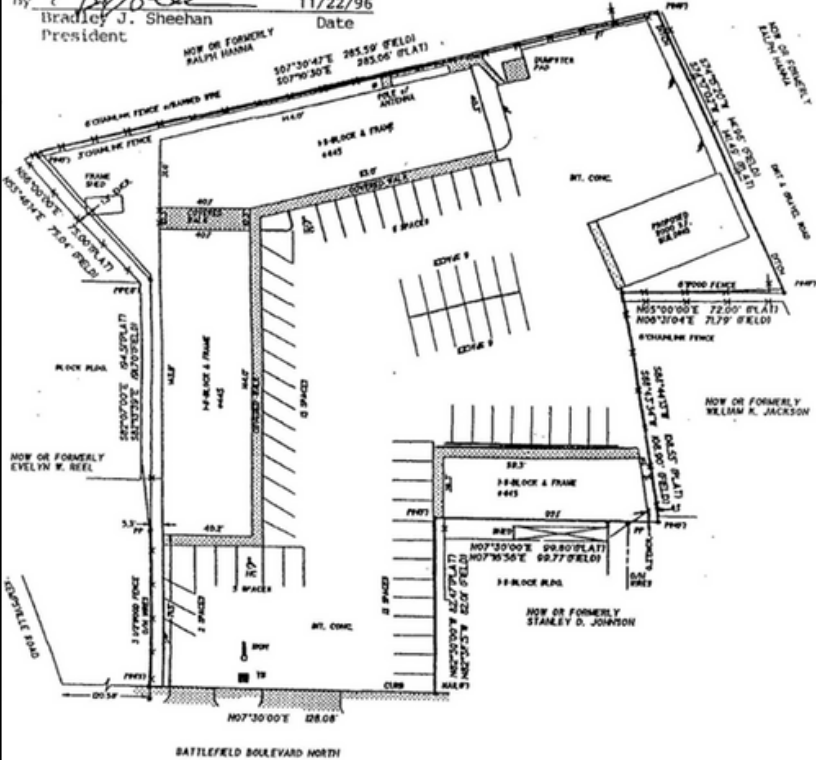


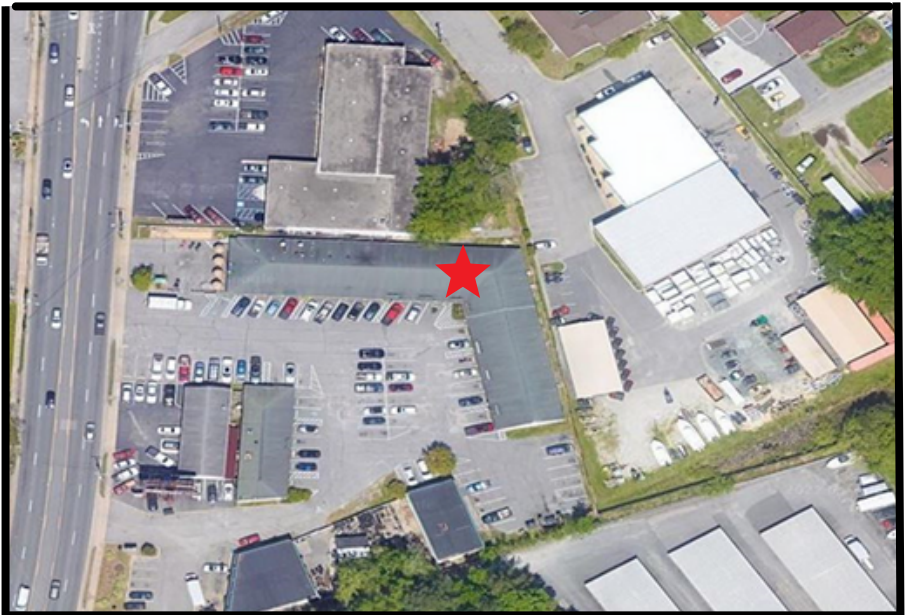
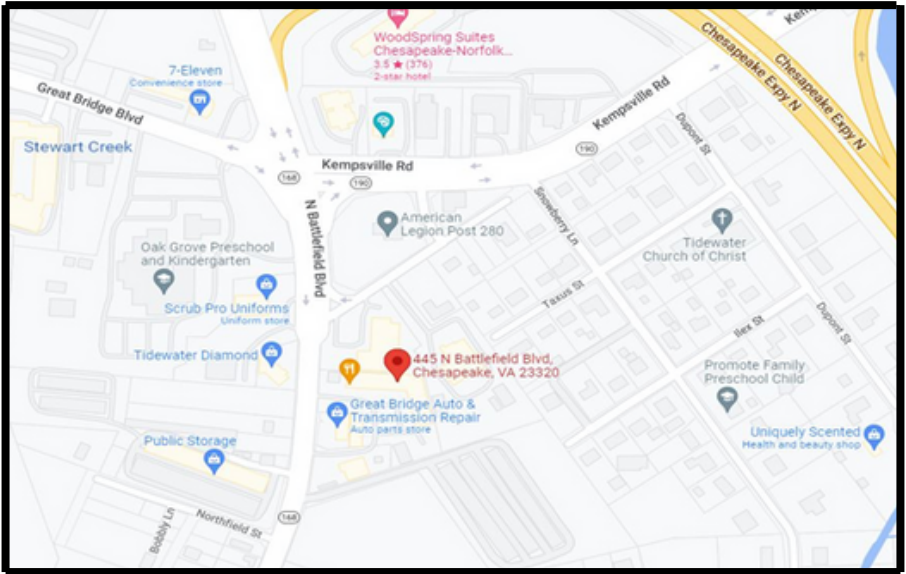
EXHIBIT
 SHOWING PROPOSED
 SITE CHANGES
 ON
 PHYSICAL SURVEY
 OF
 SURVEY OF
 MARION J. COLEY ET. ALS
 WASHINGTON BOROUGH, CHESAPEAKE, VIRGINIA
 FOR



The information presented in this marketing flyer is obtained from sources believed to be reliable, but is not warranted. This offer is subject to prior sale or lease, errors, omissions or withdrawal without notice.

RIDDLE ASSOCIATES, INC.
 Commercial Real Estate

"Real Estate Services Tailored to Your Needs"



The information presented in this marketing flyer is obtained from sources believed to be reliable, but is not warranted. This offer is subject to prior sale or lease, errors, omissions or withdrawal without notice.

RIDDLE ASSOCIATES, INC. *Commercial Real Estate*

“Real Estate Services Tailored to Your Needs”

530 WOODLAKE CIRCLE • SUITE 100 • CHESAPEAKE, VA 23320 • WWW.RIDDLEASSOCIATES.COM