

# INDUSTRIAL LAND FOR SALE

259 Saint Bribes Road E.  
Chesapeake, VA 23322



**LISTING PRICE: \$1,500,000**  
**(\$32,903/ACRE)**

**EXCLUSIVELY OFFERED BY:**

**CONTACT:**

**LARRY RUMSEY**

**lrumsy@riddleassociates.com**

**(757) 523-1900**

*\*Showing must be coordinated with the listing agent*

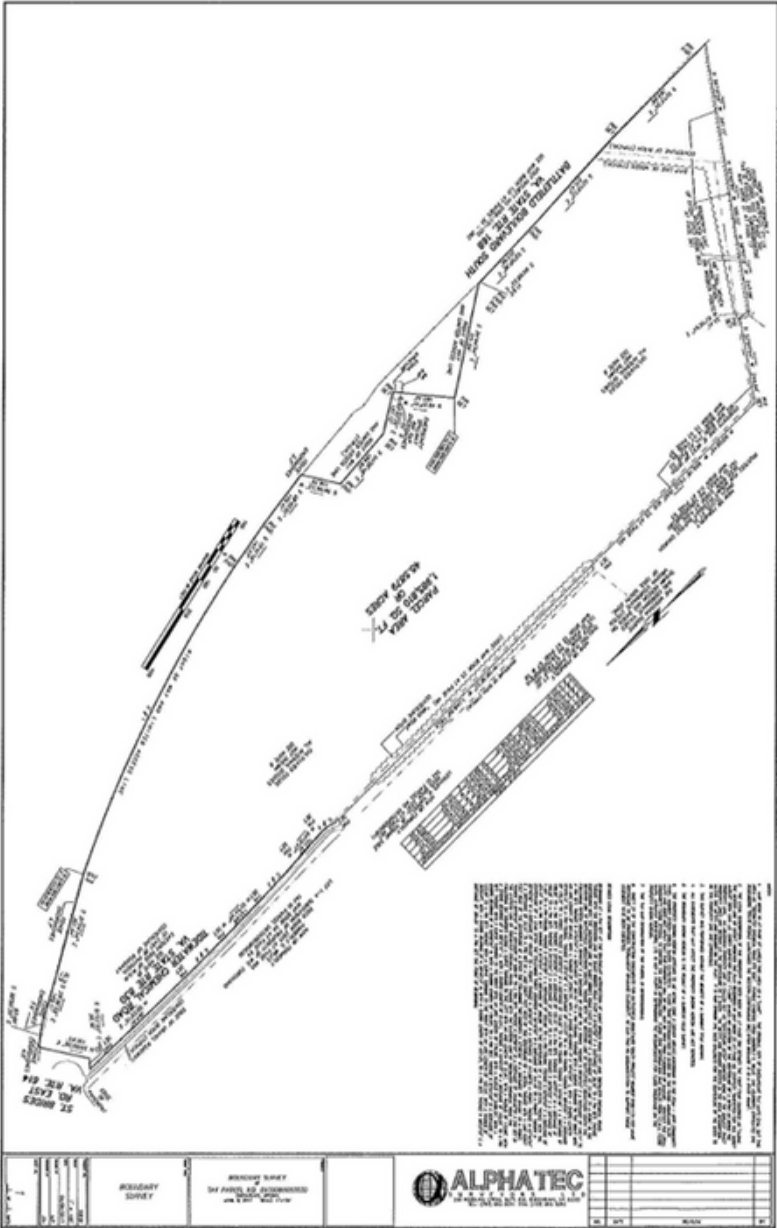
- Large Industrial Site in Chesapeake For Sale
- 45.588 Acres of Industrial Land
- Zoned M-1 (Light Industrial)
- Great Visibility to the Chesapeake Expressway
- 7 Acre Lay Down Yard
- “Previously City Approved”

The information presented in this marketing flyer is obtained from sources believed to be reliable, but is not warranted. This offer is subject to prior sale or lease, errors, omissions or withdrawal without notice.

**RIDDLE ASSOCIATES, INC.**  
Commercial Real Estate

“Real Estate Services Tailored to Your Needs”

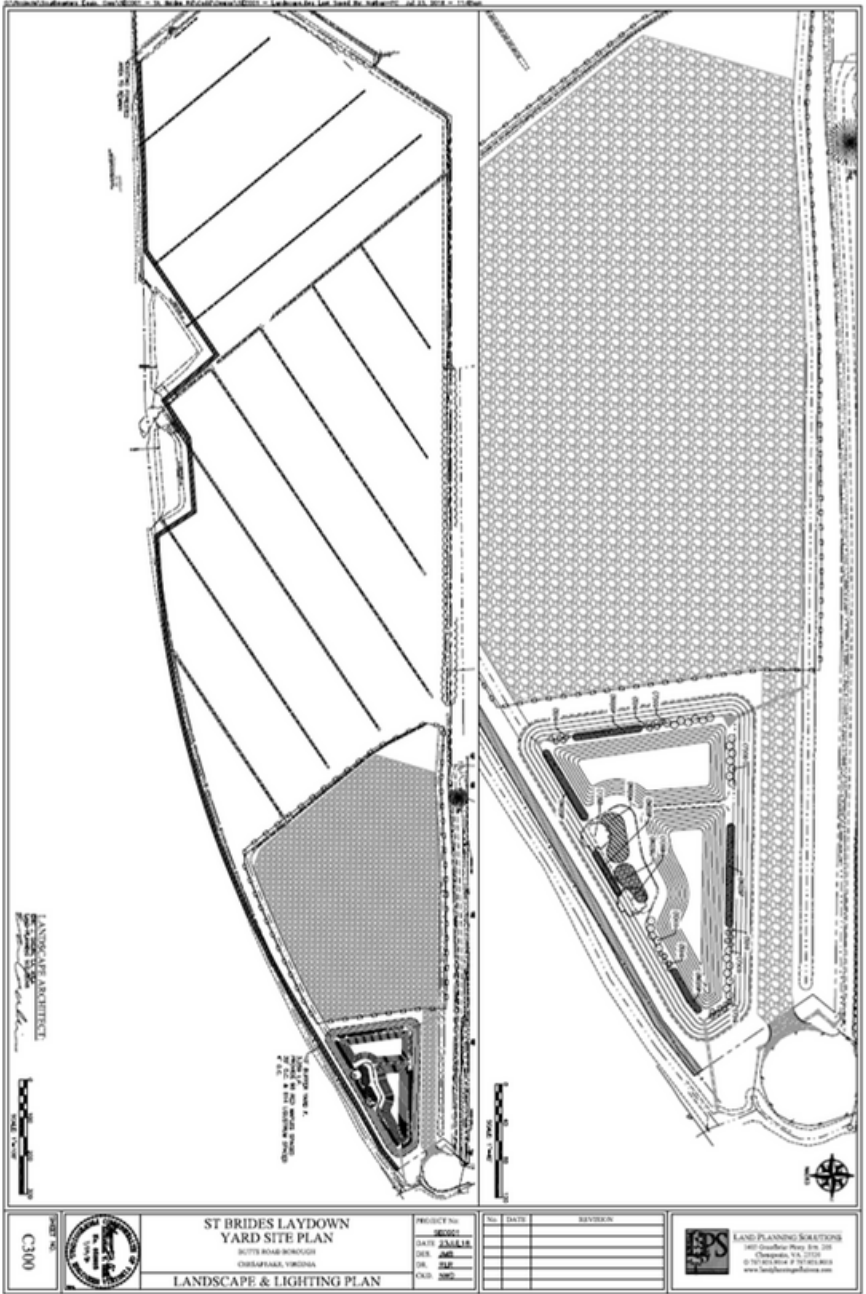




The information presented in this marketing flyer is obtained from sources believed to be reliable, but is not warranted. This offer is subject to prior sale or lease, errors, omissions or withdrawal without notice.

**RIDDLE ASSOCIATES, INC.**  
 Commercial Real Estate

“Real Estate Services Tailored to Your Needs”

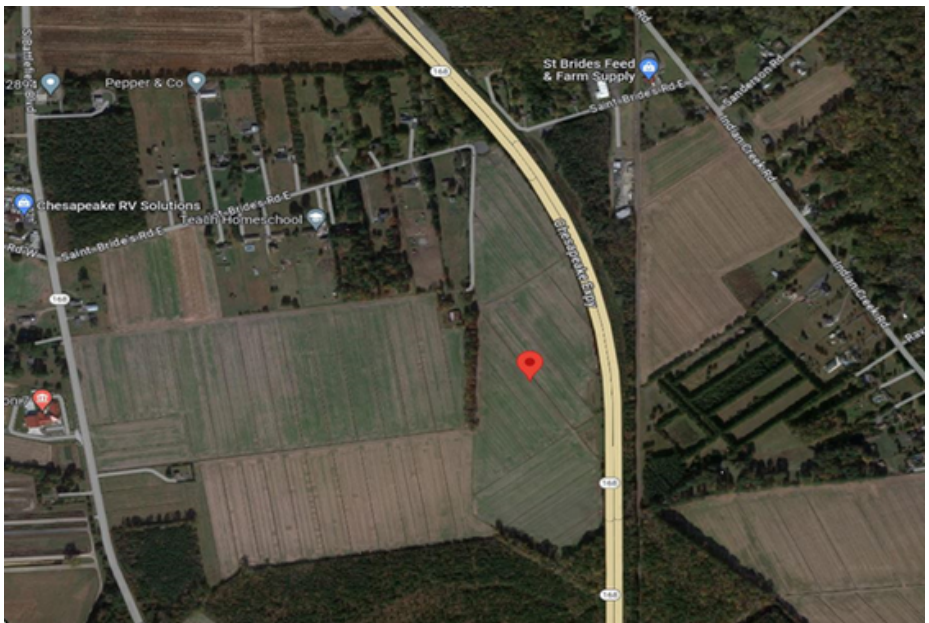
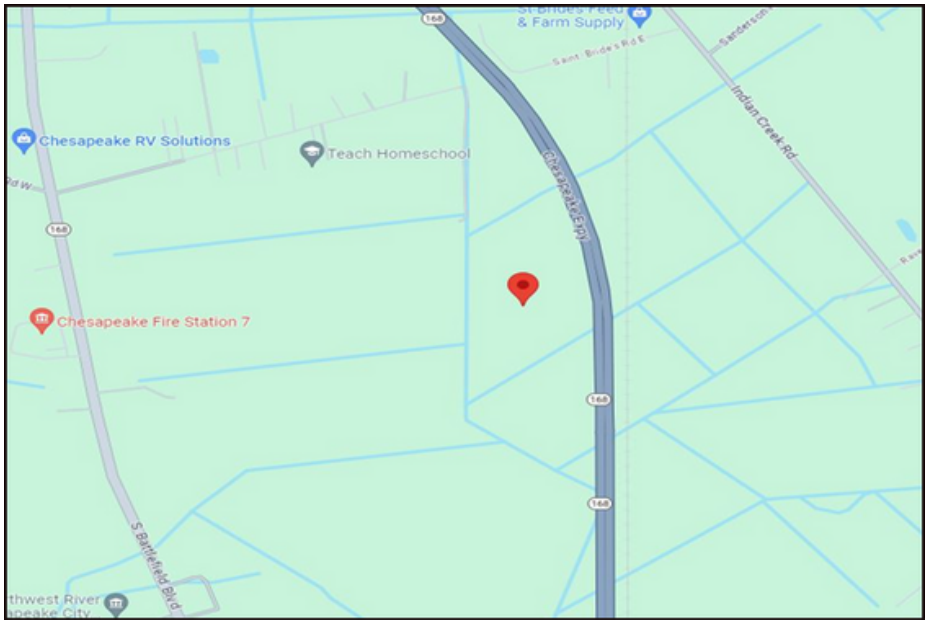


The information presented in this marketing flyer is obtained from sources believed to be reliable, but is not warranted. This offer is subject to prior sale or lease, errors, omissions or withdrawal without notice.

**RIDDLE ASSOCIATES, INC.**  
Commercial Real Estate

“Real Estate Services Tailored to Your Needs”





The information presented in this marketing flyer is obtained from sources believed to be reliable, but is not warranted. This offer is subject to prior sale or lease, errors, omissions or withdrawal without notice.

## **RIDDLE ASSOCIATES, INC.**

**Commercial Real Estate**

“Real Estate Services Tailored to Your Needs”

530 WOODLAKE CIRCLE • SUITE 100 • CHESAPEAKE, VA 23320 • [WWW.RIDDLEASSOCIATES.COM](http://WWW.RIDDLEASSOCIATES.COM)