

# TANK TERMINAL FOR LEASE

15500 Antioch Road, Milford, VA 22514



**LEASE RATE \$5,000/MONTH**

*EXCLUSIVELY OFFERED BY:*

**CONTACT:**

**LARRY RUMSEY**

**[lrums@riddleassociates.com](mailto:lrums@riddleassociates.com)**

**(757) 523-1900**

*\*Showing must be coordinated with the listing agent*

- Six above ground tanks, 113,000 gallons, on 1.48 acres
- 5 - Horizontal Tanks (3-20,000 gallon, 1-18,000 gallon, 1-15,000 gallon)
- 1 Vertical Tank (1-20,000 gallon)
- Approximately 3,760SF office | warehouse, 5 offices, 1,400SF warehouse
- Separate storage building
- City water, septic tank, & sewer

The information presented in this marketing flyer is obtained from sources believed to be reliable, but is not warranted. This offer is subject to prior sale or lease, errors, omissions or withdrawal without notice.

**RIDDLE ASSOCIATES, INC.**  
Commercial Real Estate

**"Real Estate Services Tailored to Your Needs"**



The information presented in this marketing flyer is obtained from sources believed to be reliable, but is not warranted. This offer is subject to prior sale or lease, errors, omissions or withdrawal without notice.

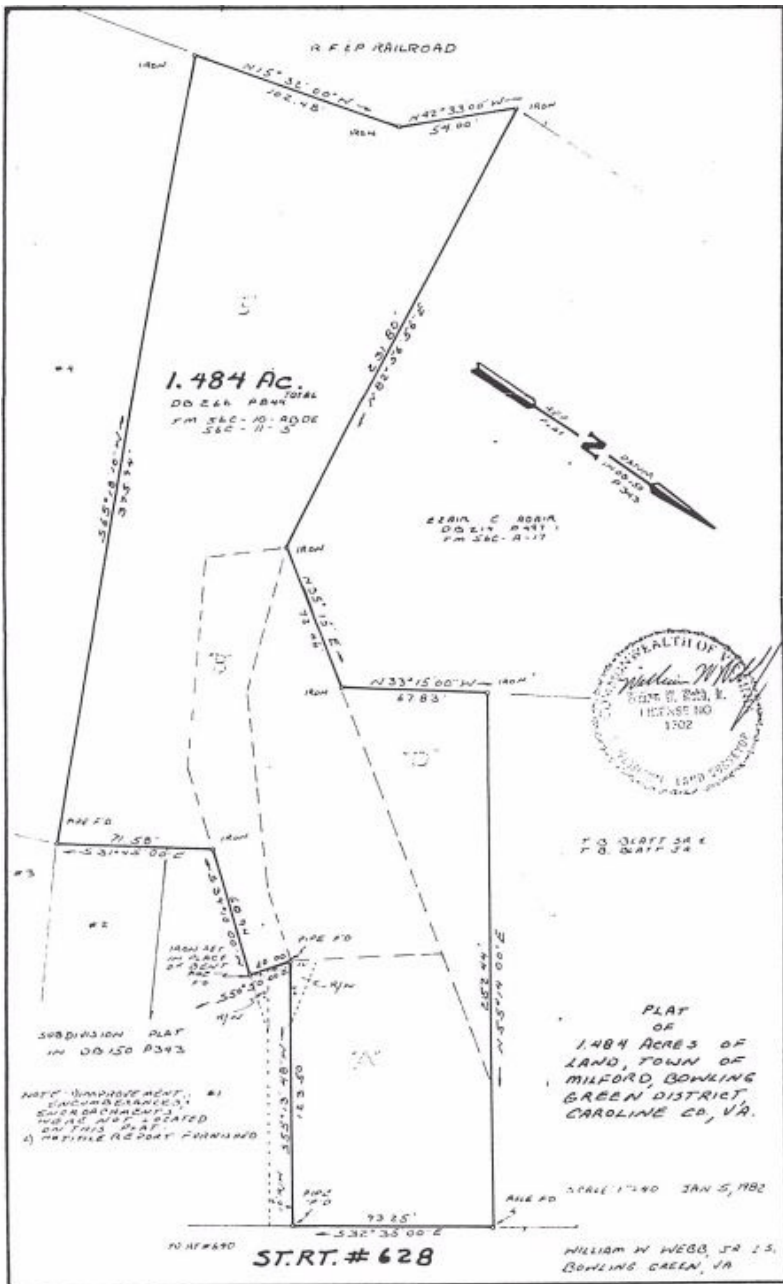
---

## **RIDDLE ASSOCIATES, INC.**

**Commercial Real Estate**

“Real Estate Services Tailored to Your Needs”

530 WOODLAKE CIRCLE • SUITE 100 • CHESAPEAKE, VA 23320 • [WWW.RIDDLEASSOCIATES.COM](http://WWW.RIDDLEASSOCIATES.COM)

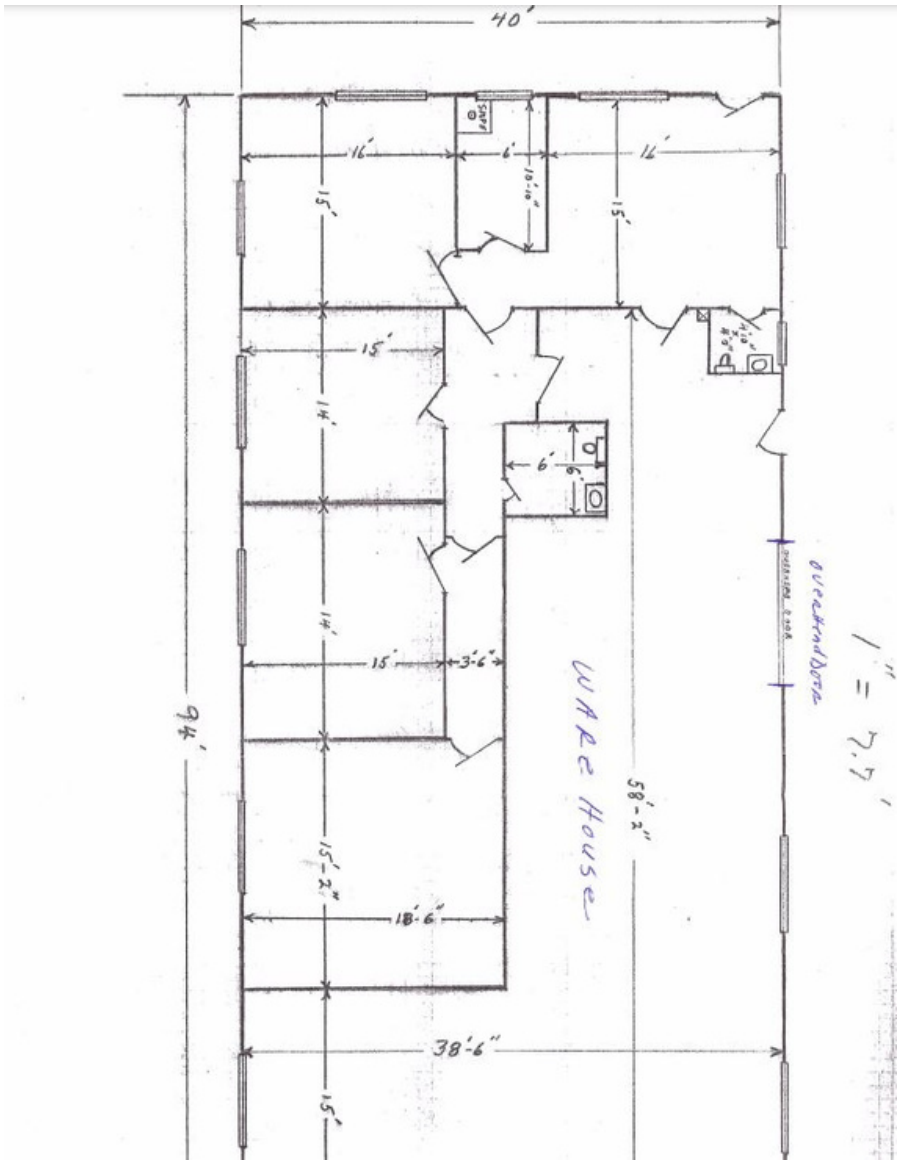


The information presented in this marketing flyer is obtained from sources believed to be reliable, but is not warranted. This offer is subject to prior sale or lease, errors, omissions or withdrawal without notice.

**RIDDLE ASSOCIATES, INC.**  
Commercial Real Estate

"Real Estate Services Tailored to Your Needs"

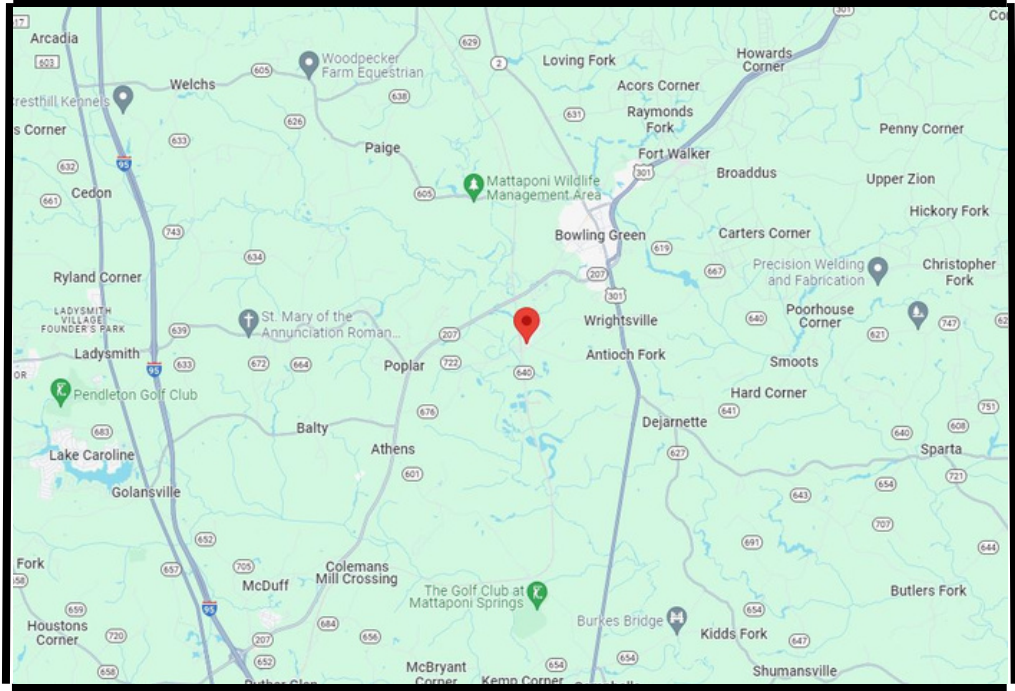
530 WOODLAKE CIRCLE • SUITE 100 • CHESAPEAKE, VA 23320 • [WWW.RIDDLEASSOCIATES.COM](http://WWW.RIDDLEASSOCIATES.COM)



The information presented in this marketing flyer is obtained from sources believed to be reliable, but is not warranted. This offer is subject to prior sale or lease, errors, omissions or withdrawal without notice.

**RIDDLE ASSOCIATES, INC.**  
**Commercial Real Estate**

"Real Estate Services Tailored to Your Needs"



The information presented in this marketing flyer is obtained from sources believed to be reliable, but is not warranted. This offer is subject to prior sale or lease, errors, omissions or withdrawal without notice.

## **RIDDLE ASSOCIATES, INC.** *Commercial Real Estate*

“Real Estate Services Tailored to Your Needs”

530 WOODLAKE CIRCLE • SUITE 100 • CHESAPEAKE, VA 23320 • [WWW.RIDDLEASSOCIATES.COM](http://WWW.RIDDLEASSOCIATES.COM)