

**RIDDLE**  
**ASSOCIATES** Inc.  
Commercial Real Estate

**OFFICE SPACE**  
**SUBLEASE AVAILABLE**  
840 Greenbrier Circle, Suite 104  
Chesapeake, Virginia  
(Greenbrier—off Woodlake Drive)



- **\$7,726.25 per month (\$17.50 sf) FULL SERVICE**
- **5,298 Square Feet Of Office Space**
- **Perfect for a call center**
- **Ample Parking**
- **Greenbrier Business Park**
- **Easy access to I-64 at Greenbrier Pkwy.**

**FOR MORE INFORMATION CONTACT: JIM RESOLUTE**

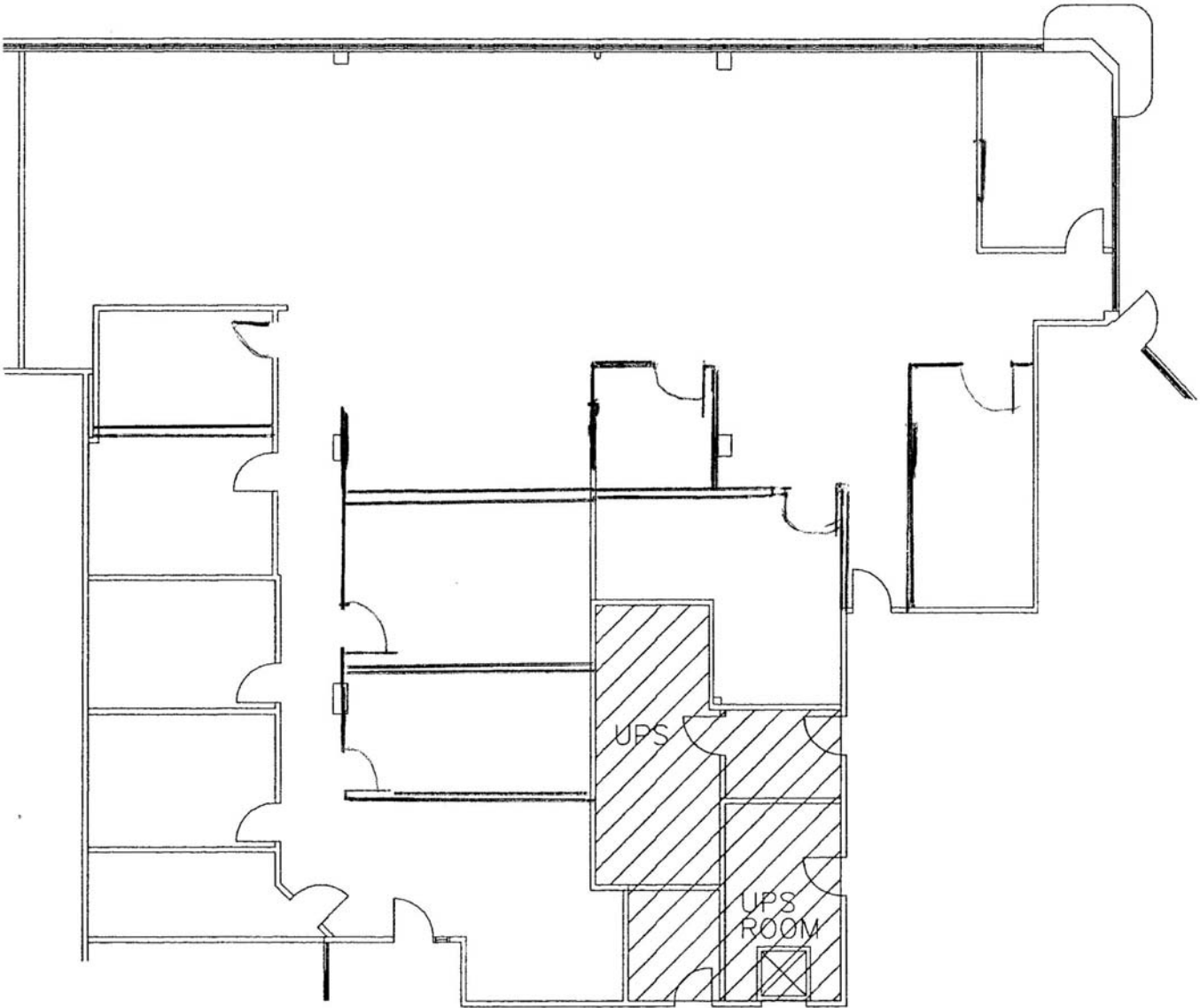
*The information presented in this marketing flyer is obtained from sources believed to be reliable, but is not warranted. This offer is subject to prior sale or lease, errors, omissions or withdrawal without notice.*

*EXCLUSIVELY OFFERED BY*

**RIDDLE ASSOCIATES, INC.**

**(757) 523-1900**

**530 Woodlake Circle, Suite #100, Chesapeake, VA 23320**



AVAILABLE TENANT SPACE  
@ 840 GREENBRIER CIRCLE - 1ST FLOOR - SUITE - 104

NTO TO SCALE

5,298 RSF

