

**RIDDLE**  
**ASSOCIATES** Inc.  
Commercial Real Estate

# OFFICE/WAREHOUSE FOR LEASE

200 Tintern Court, Chesapeake, VA 23320  
in Greenbrier

Off Battlefield Blvd. at I-264  
near Lowes and Home Depot



1,500-9,600 square feet available  
Rates start at \$9.75 per square foot

- Potential Sizes available: 1,500 sf, 1,800 sf, 3,000 sf, 3,300 sf, 4,800 sf, 6,300 sf, 7,800 sf and 9,600 sf.
- 12' Grade level door in each unit
- Quality brick construction with high ceilings, ample parking and loading areas
- Tenant responsible for its utilities and interior maintenance
- Landlord responsible for exterior maintenance, taxes and casualty insurance
- Ideal for retail/office/warehouse uses

**For more information, please contact Bill Brackman or  
Robb Riddle, CCIM**

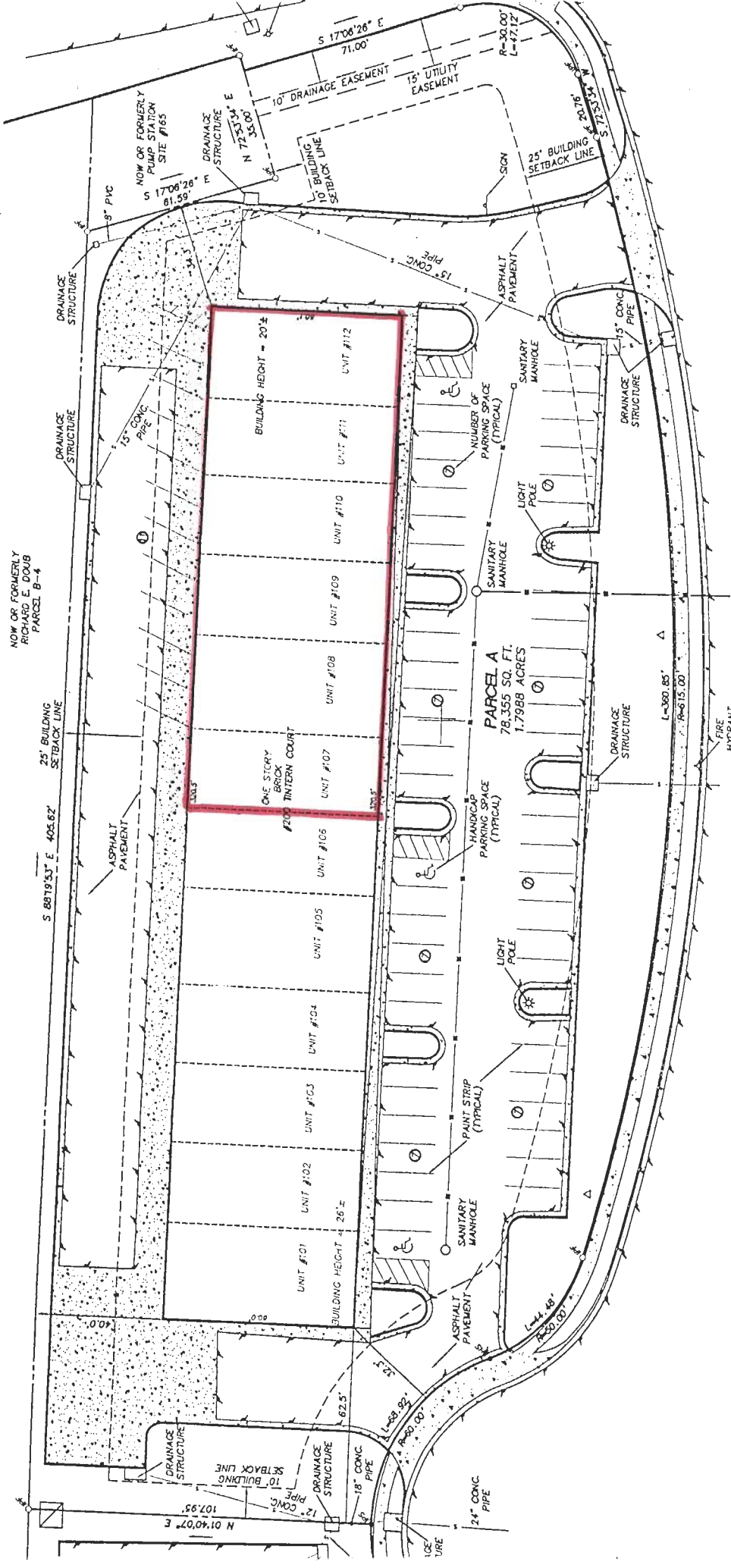
The information presented in this marketing flyer is obtained from sources believed to be reliable, but is not warranted. This offer is subject to prior sale or lease, errors, omissions or withdrawal without notice.

*EXCLUSIVELY OFFERED BY*

**RIDDLE ASSOCIATES, INC.**

**(757) 523-1900**

**530 Woodlake Circle, Suite #100, Chesapeake, VA 23320**



PHYSICAL SURVEY OF  
**PARCEL**  
 SUBDIVISION PLA  
 OF PARCEL 1,  
**REDDECK PRC**  
 (M.B. 95, PG. 12  
 WASHINGTON BOROUGH CHE  
 OCTOBER 2, 2008 SC#  
 EXCLUSIVELY FOR  
**ADOLPHUS PRC**



**LEGEND**

	EDGE OF PAVEMENT
	CURB
	CONCRETE CURB AND GUTTER
	PROPERTY LINE (E)
	UNDERGROUND UTILITY PEDESTAL
	POLE TRANSFORMER
	FENCE LINE

ON A PLAT RECORDED IN THE CLERK'S OFFICE OF THE CIRCUIT COURT OF THE CITY OF  
 MAP BOOK 101 AT PAGE 83.  
 THAT I, ON OCTOBER 2, 2008 SURVEYED THE PROPERTY SHOWN HEREON, AND THAT THE TITLE  
 INTERESTS ARE AS SHOWN HEREON. THE IMPROVEMENTS STAND STRICTLY WITHIN THE TITLE  
 ENCROACHMENTS OR VISIBLE EASEMENTS EXCEPT AS SHOWN HEREON.  
 HEREON APPEARS TO LIE WITHIN ZONE X [OTHER AREAS] (AREAS DETERMINED TO BE  
 "COOPLAIN") ACCORDING TO THE FEMA - NFIP COMMUNITY PANEL NUMBER 510034-0024C,  
 ZONE DETERMINATION IS BASED ON THE FLOOD INSURANCE RATE MAPS AND DOES NOT  
 GUARANTEE OR WARRANT THAT THE PROPERTY WILL OR WILL NOT BE FREE FROM FLOODING. CONTACT THE FIRM AT

TINTERN COURT  
 (50' RIGHT OF WAY)

NOW OR FORMERLY  
 RICHARD E. DOUB  
 PARCEL B-4

NOW OR FORMERLY  
 PAUL STATION  
 SITE #105