

RIDDLE
ASSOCIATES Inc.
Commercial Real Estate

INVESTMENT OPPORTUNITY Greenbrier Office/Warehouse FOR SALE OR LEASE

1133 Executive Blvd.
Chesapeake, VA 23320



- **PURCHASE PRICE: \$1,500,000**
- 27,000 Total Square Feet of Office/Warehouse
- 12,540sf vacant. (14,460sf leased)
- Multiple grade level doors
- Conditioned Warehouse, 12'-16' ceilings
- Sprinkler System. 3-Phase Power.
- Ideal for Owner/Occupant
- **LEASE RATE:**
- \$8.00/sf (\$8,360/month)
- Full Service
- 12,540 square feet
- Approx 1,600sf Office
- 10,940sf Warehouse
- 12' x 12' grade level door
- Zoned Industrial

For information, contact: Larry Rumsey

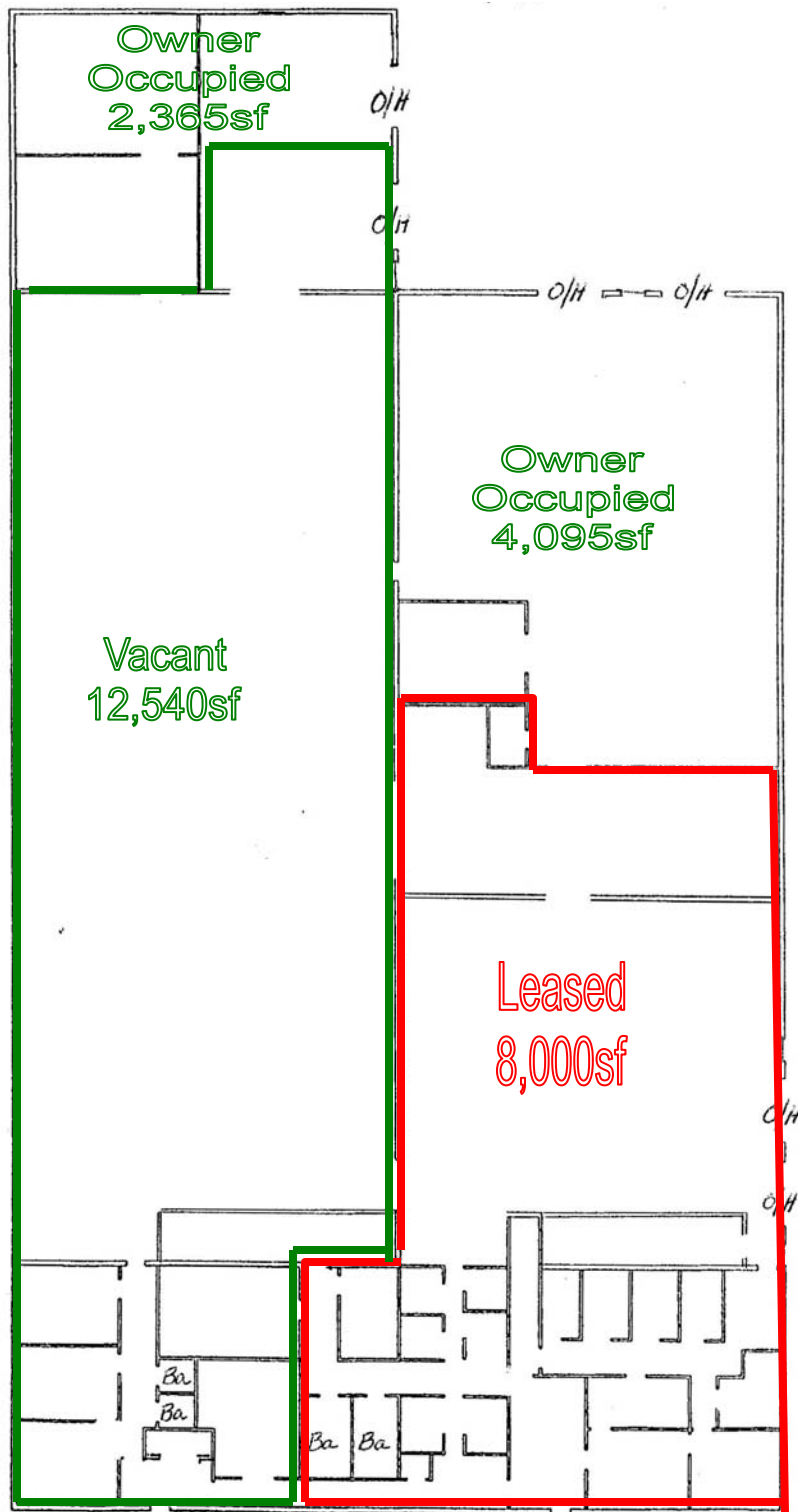
The information presented in this marketing flyer is obtained from sources believed to be reliable, but is not warranted. This offer is subject to prior sale or lease, errors, omissions or withdrawal without notice.

EXCLUSIVELY OFFERED BY

RIDDLE ASSOCIATES, INC.

(757) 523-1900

530 Woodlake Circle, Suite 100, Chesapeake, VA 23320



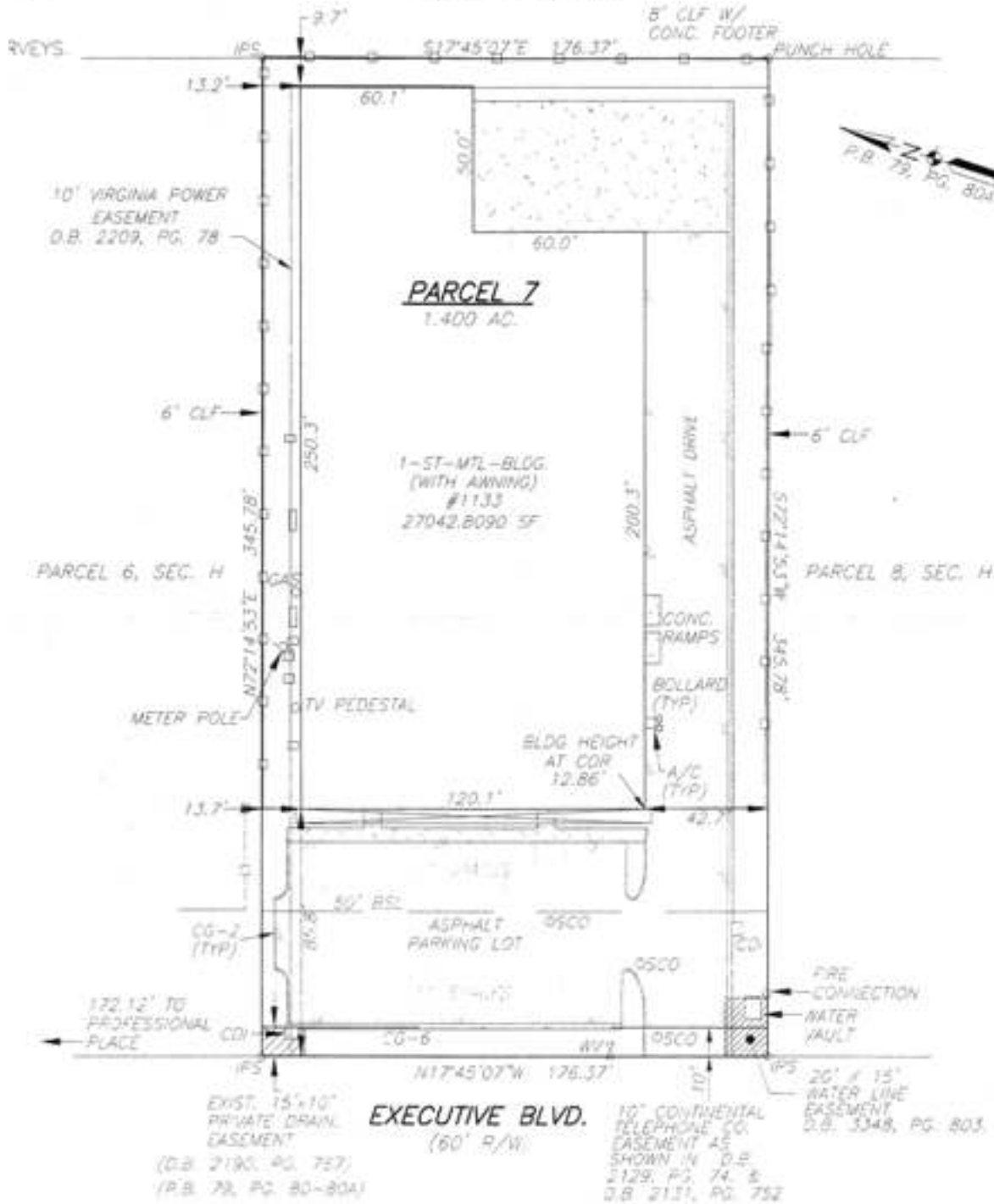
RIDDLE ASSOCIATES, INC.

(757) 523-1900

530 Woodlake Circle, Suite 100, Chesapeake, VA 23320

INDING
IRACY

PARCEL 5, SEC. H



10' VIRGINIA POWER
EASEMENT
O.B. 2209, PG. 78

P.B. 79, PG. 80A

PARCEL 7
1.400 AC.

1-ST-MTL-BLDG.
(WITH AWNING)
#1133
27042.8090 5F

PARCEL 6, SEC. H

PARCEL 8, SEC. H

BLDG HEIGHT
AT COR
12.86'

EXECUTIVE BLVD.
(60' R/W)

EXIST. 15'x10'
PRIVATE DRAIN.
EASEMENT
(O.B. 2190, PG. 757)
(P.B. 79, PG. 80-80A)

10' CONTINENTAL
TELEPHONE CO.
EASEMENT AS
SHOWN IN O.B.
2129, PG. 74 &
2.B. 2121, PG. 752

20' x 15'
WATER LINE
EASEMENT
O.B. 3348, PG. 803

